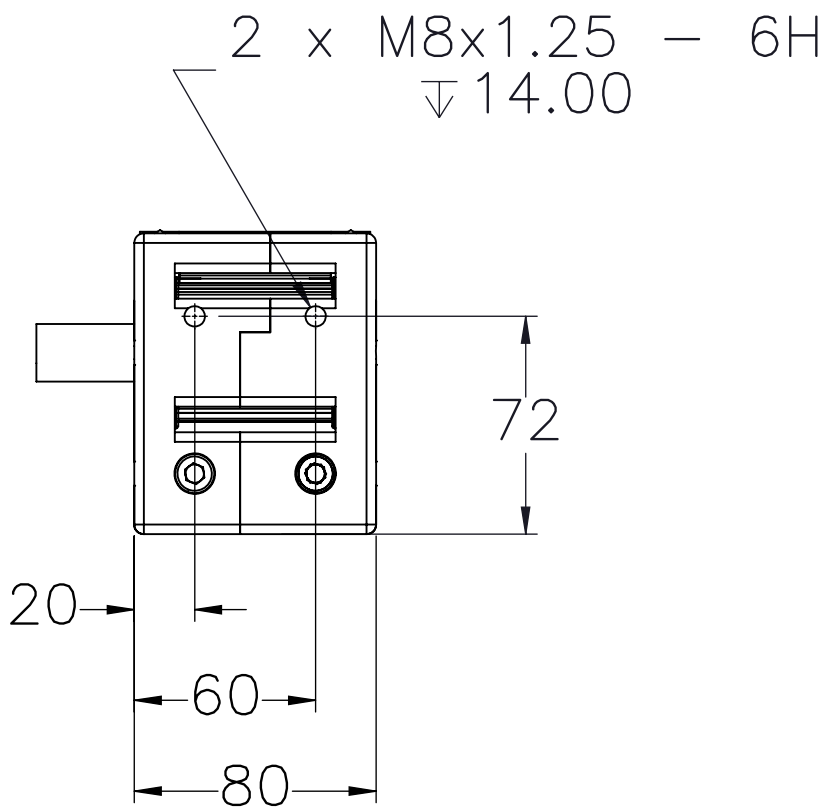
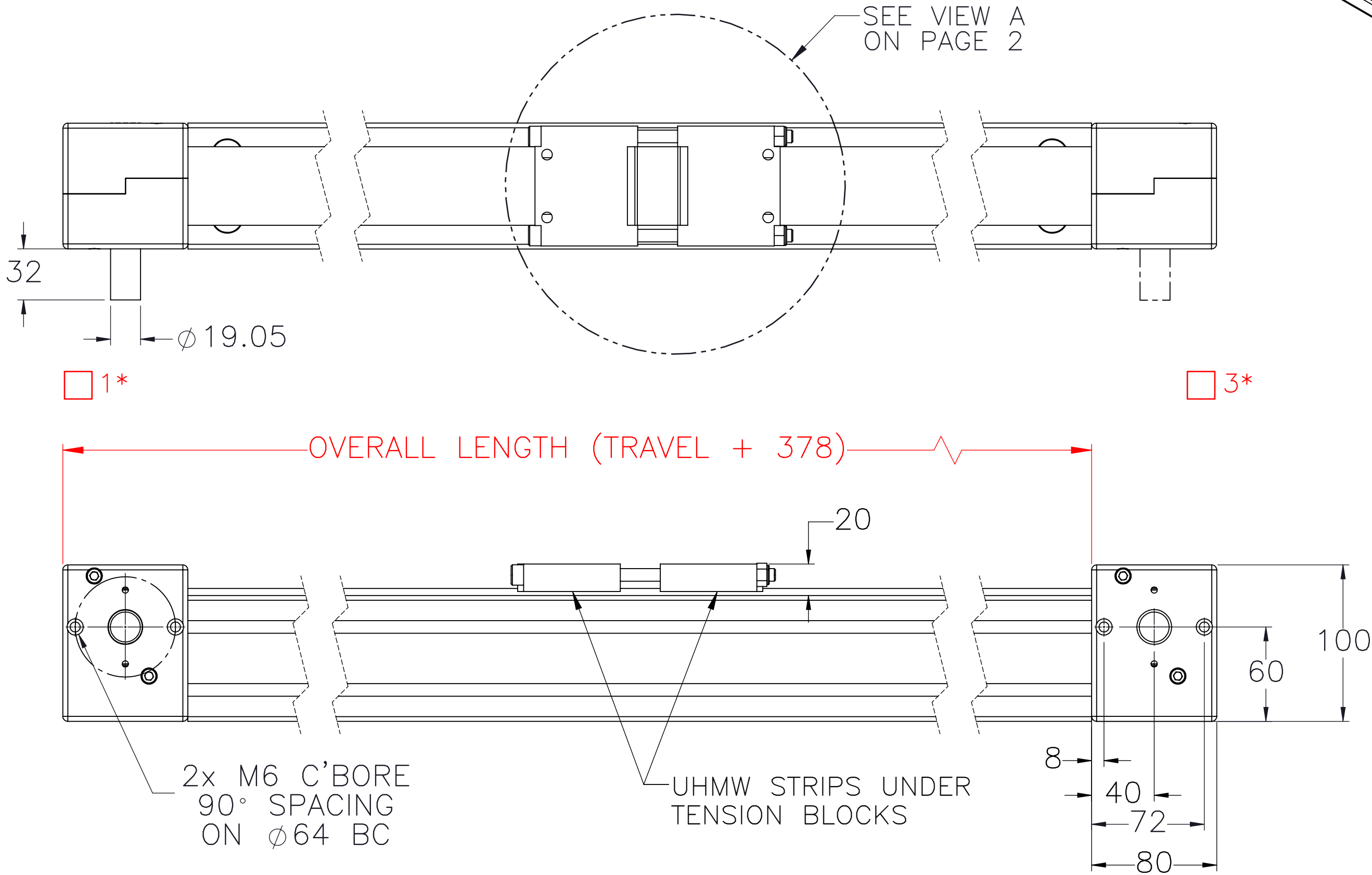
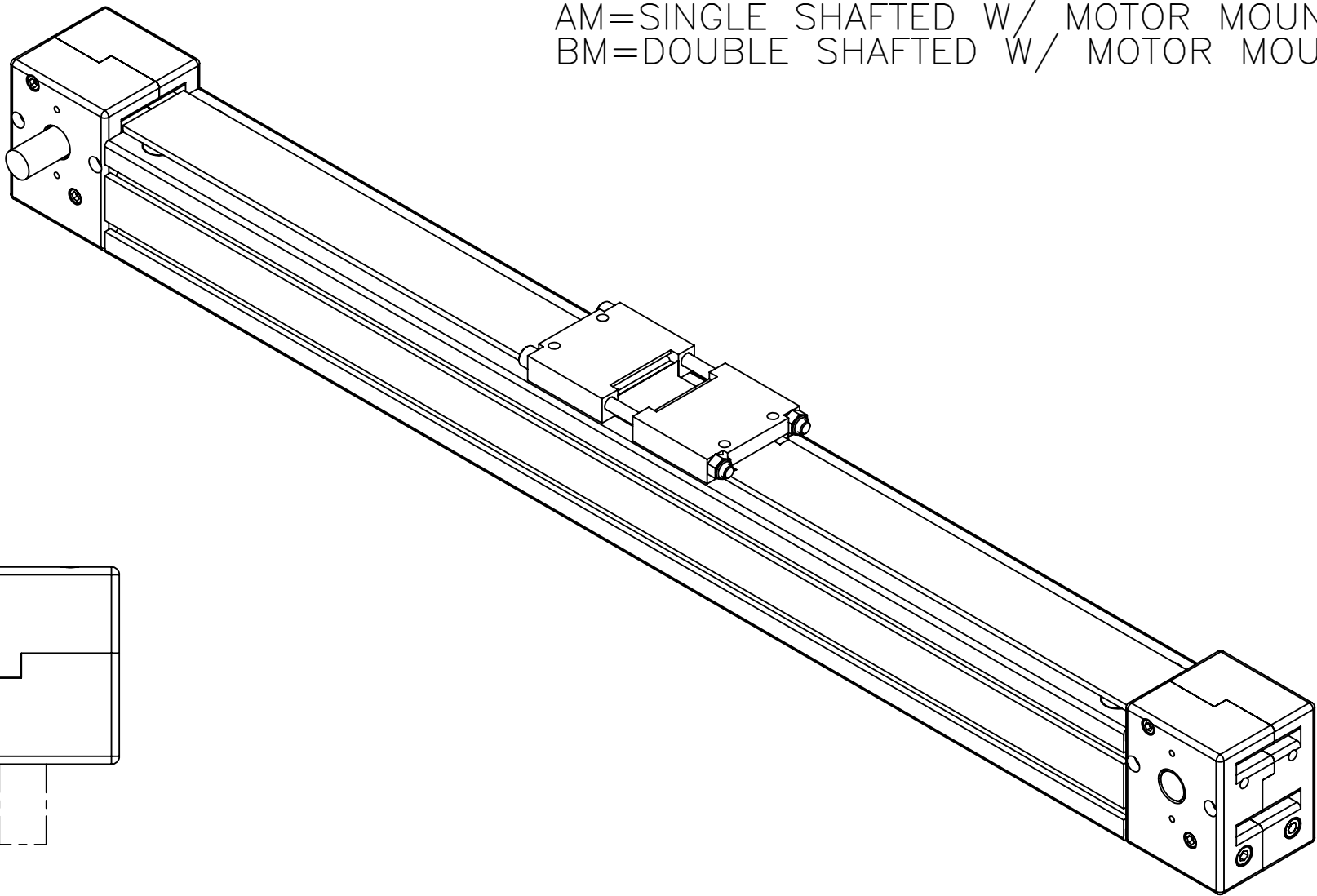


iSA-SB5-G-BE-

PULLEY PITCH DIAMETER	47.75mm (1.880")
PULLEY WIDTH	54.0mm (2.124")
PULLEY MATERIAL	STEEL
BELT WEIGHT (kg)	$((\text{TRAVEL IN METERS} \times 2) + .74) \times .34$
TRAVEL PER REV.	150mm
TRAVEL MIN.	150mm
TRAVEL MAX.	5775mm
TENSION ASSY WEIGHT (kg)	1.04kg
SYSTEM WEIGHT (kg)	$(\text{TRAVEL IN METERS} \times 5.5) + 6.7$


ENTER
TRAVEL IN INCREMENTS OF 25mm
SELECT
DRIVE SHAFT LOCATION*
SHAFTING TYPE
A0= SINGLE SHAFTED
B0= DOUBLE SHAFTED
AM= SINGLE SHAFTED W/ MOTOR MOUNT
BM= DOUBLE SHAFTED W/ MOTOR MOUNT



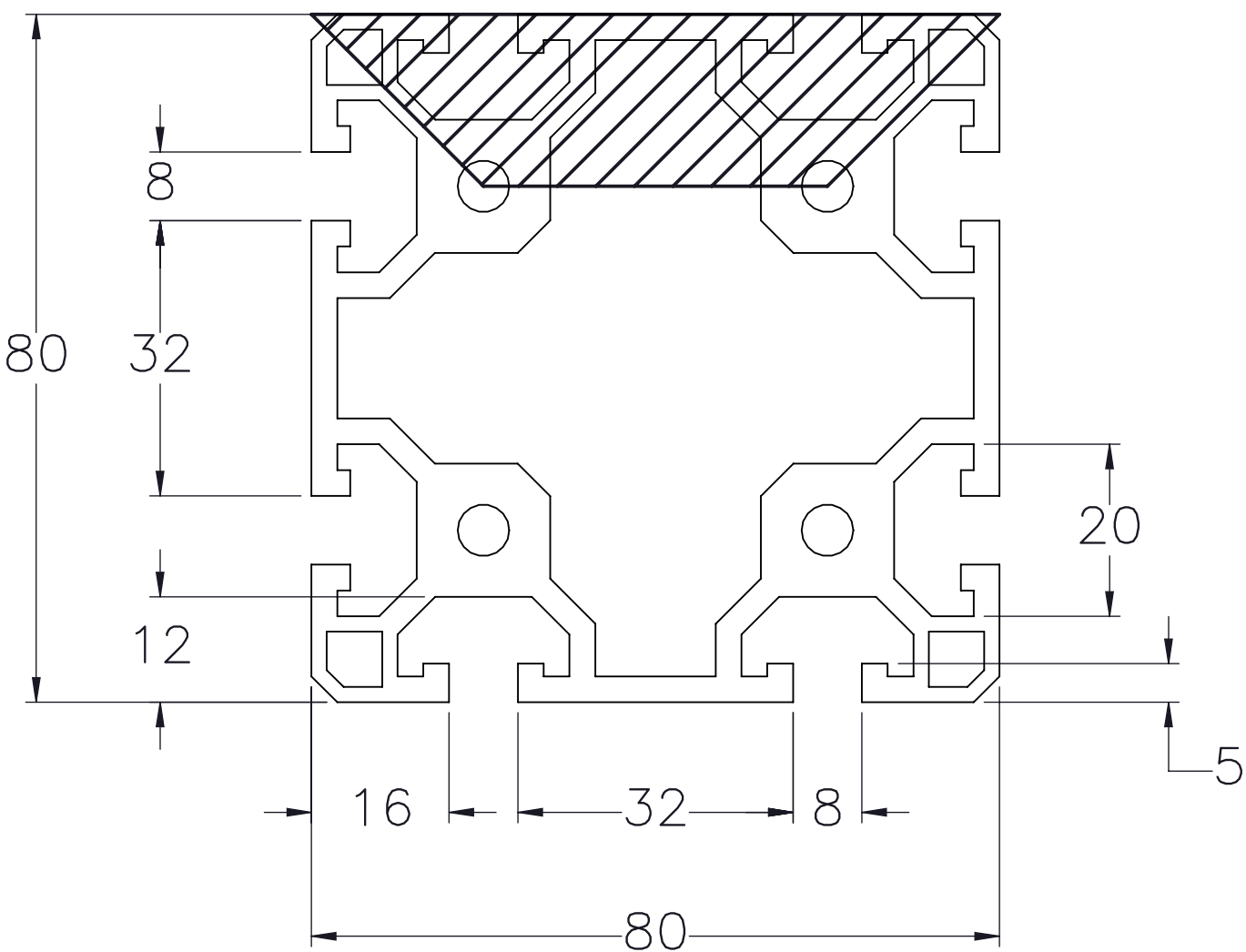
APPROVED: _____

DATE: _____

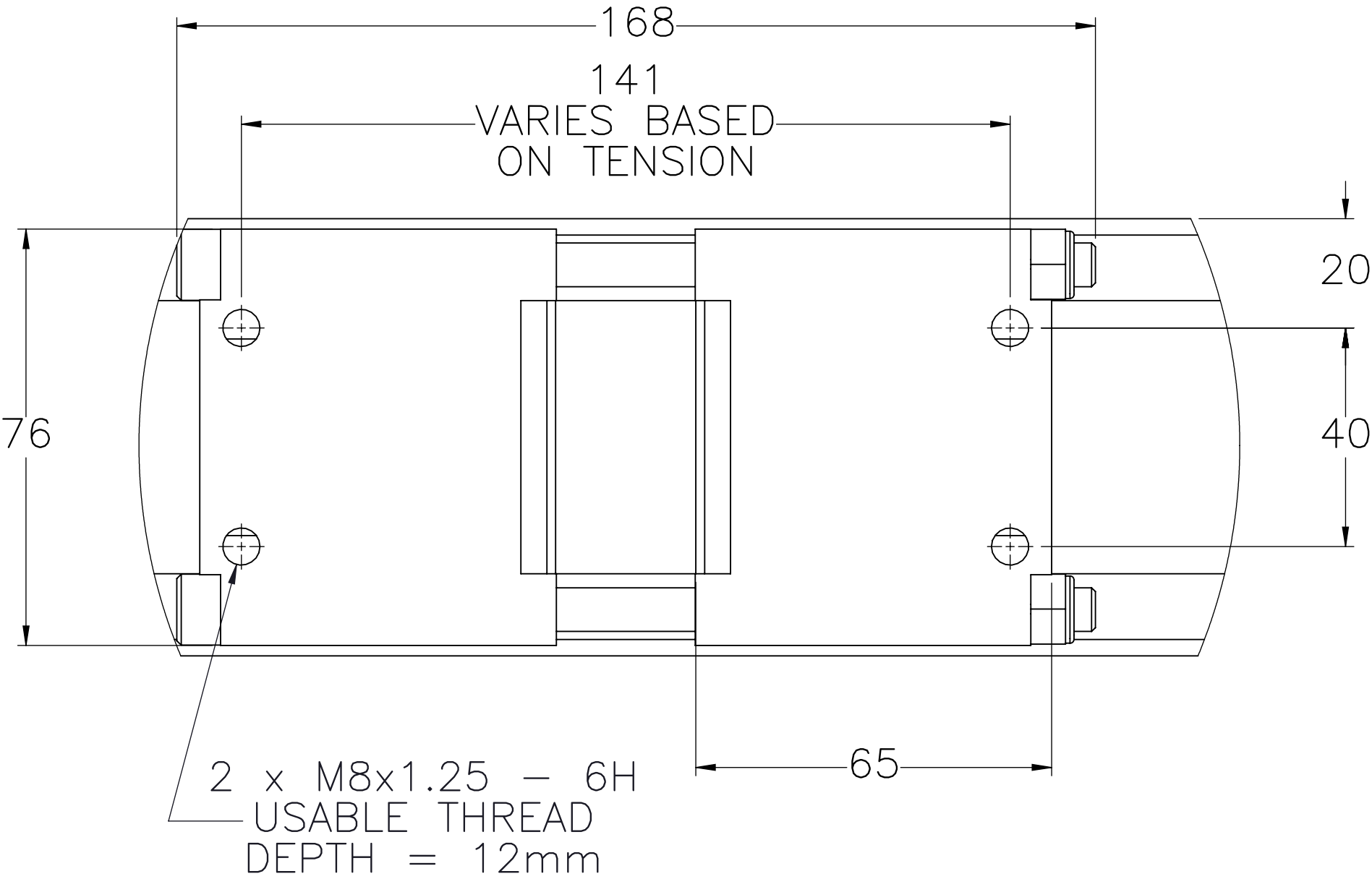
SPECIFICATIONS ARE SUBJECT TO CHANGE WITHOUT NOTICE

 INDUSTRIAL PROFILE SYSTEMS	DRAWN BY: --	DATE: DD/MM/YYYY	MATERIAL:	TITLE: IPS SINGLEBELT DRIVE 50		
	CHECKED BY: --	DATE: DD/MM/YYYY	FINISH:			
	LAST SAVED BY: --	DATE: DD/MM/YYYY	UNLESS OTHERWISE SPECIFIED, DIMENSIONS ARE IN MILLIMETER. TOLERANCES UNLESS NOTED OTHERWISE: .X ± .762 .XX ± .254 .XXX ± .127 ANG ± 0°30'			
	SURFACE FINISH <input checked="" type="checkbox"/>		BREAK ALL SHARP EDGES DIMENSIONAL LIMITS APPLY AFTER FINISHING THIRD ANGLE PROJECTION			
SHEET 1 OF 2		PART NUMBER		SCALE 1:1	SHEET SIZE C	REV
iSA-SB5						

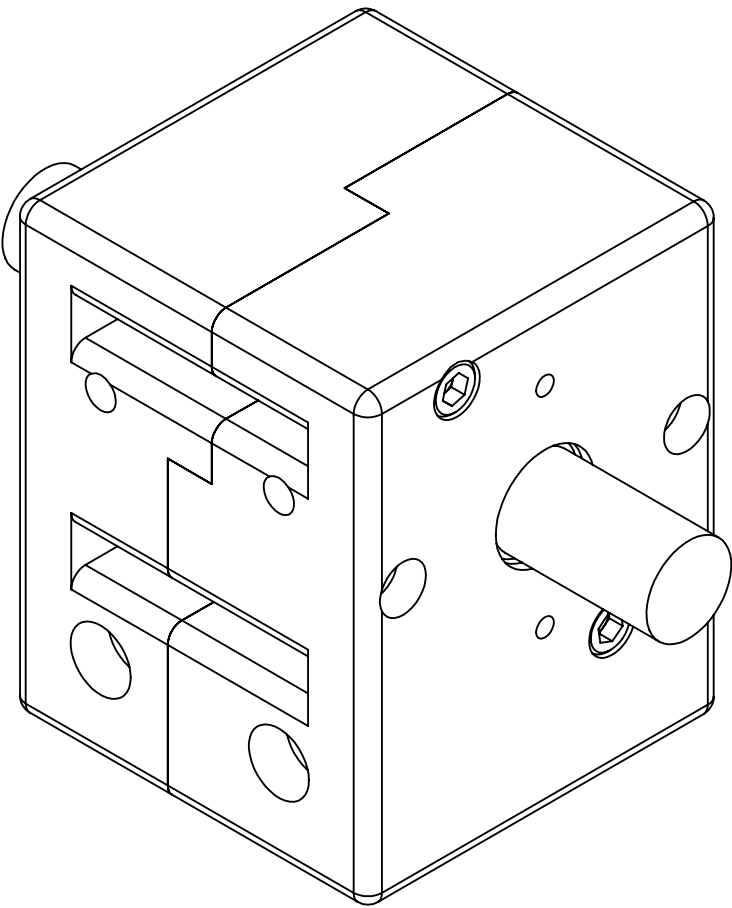
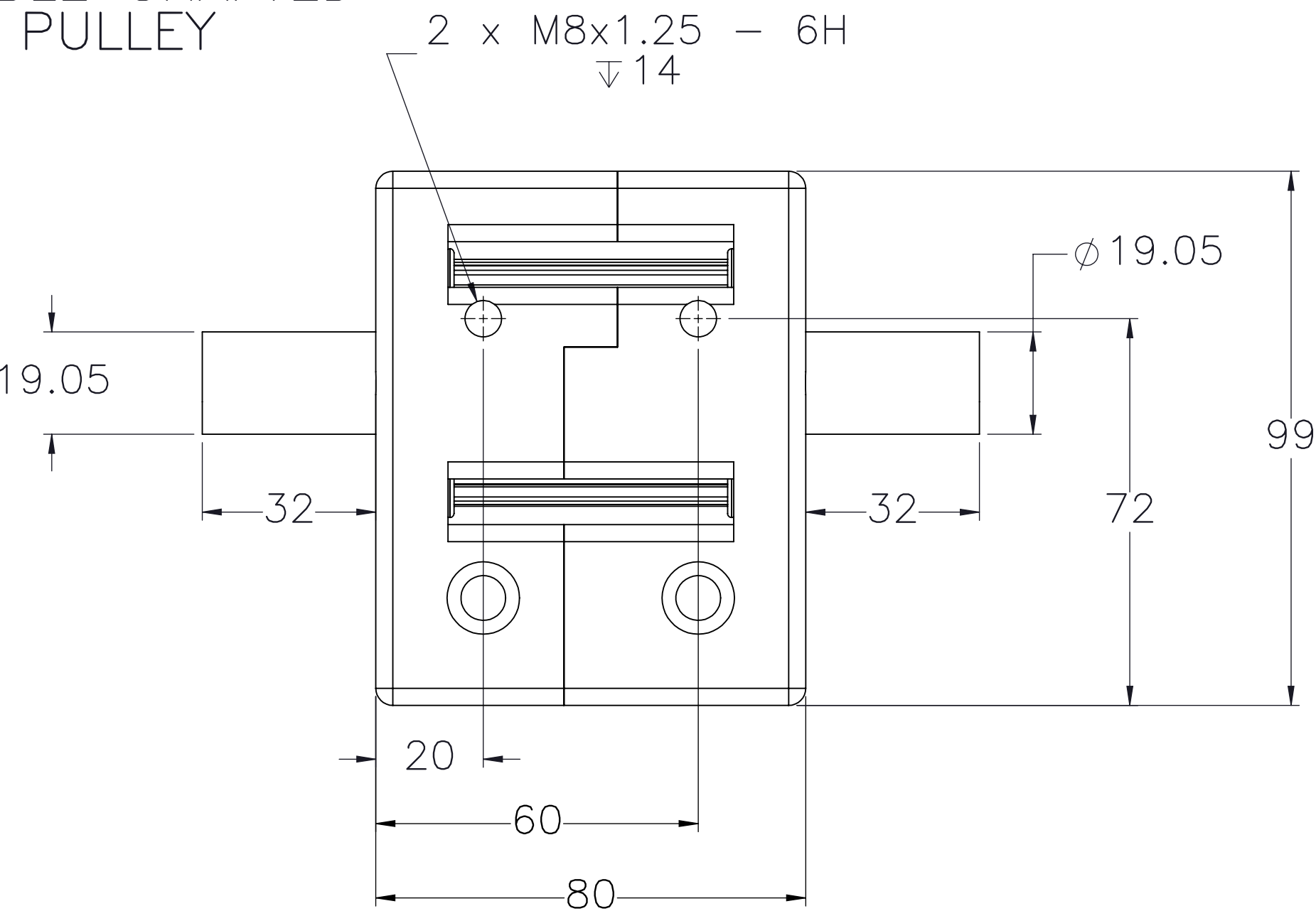
ACTUATOR BODY
MOUNTING FEATURES
T-NUT SLOTS




DETAILED CART
VIEW A



DOUBLE SHAFTED
PULLEY



 INDUSTRIAL PROFILE SYSTEMS	DRAWN BY: --	DATE: DD/MM/YYYY	MATERIAL:	TITLE: IPS SINGLEBELT DRIVE 50	
	CHECKED BY: --	DATE: DD/MM/YYYY	FINISH:		
	LAST SAVED BY: --	DATE: DD/MM/YYYY	UNLESS OTHERWISE SPECIFIED, DIMENSIONS ARE IN MILLIMETER. TOLERANCES UNLESS NOTED OTHERWISE:	SCALE 1:1	SHEET SIZE C
	SURFACE FINISH $\sqrt{63}$		BREAK ALL SHARP EDGES DIMENSIONAL LIMITS APPLY AFTER FINISHING THIRD ANGLE PROJECTION	SHEET 2 OF 2	PART NUMBER ISA-SB5

SPECIFICATIONS ARE SUBJECT
TO CHANGE WITHOUT NOTICE