

iSA-SB2-E-BC-



PULLEY PITCH DIAMETER	47.75mm (1.880")
PULLEY WIDTH	28.9mm (1.138")
PULLEY MATERIAL	STEEL
BELT WEIGHT (kg)	$((\text{TRAVEL IN METERS} \times 2) + .61) \times .12$
TRAVEL PER REV.	150mm
TRAVEL MIN.	150mm
TRAVEL MAX.	5825mm
TENSION ASSY WEIGHT (kg)	0.34kg
SYSTEM WEIGHT (kg)	$(\text{TRAVEL IN METERS} \times 3.3) + 2.8$

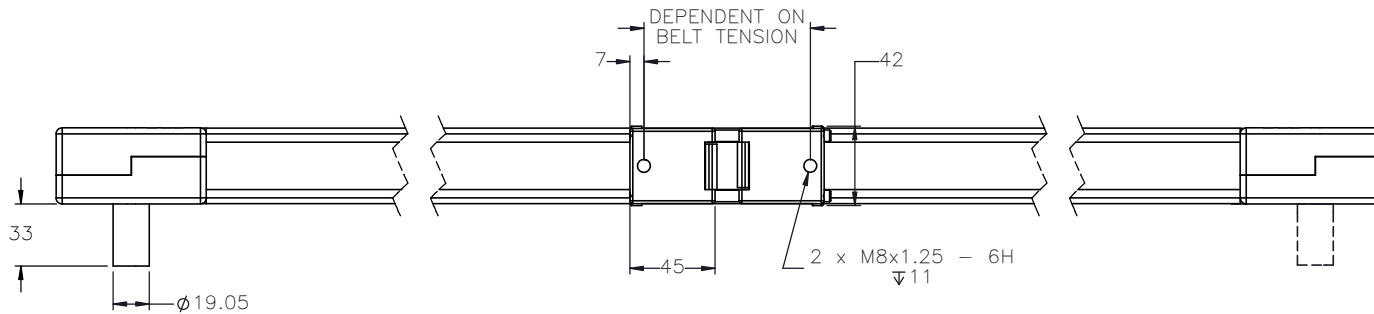
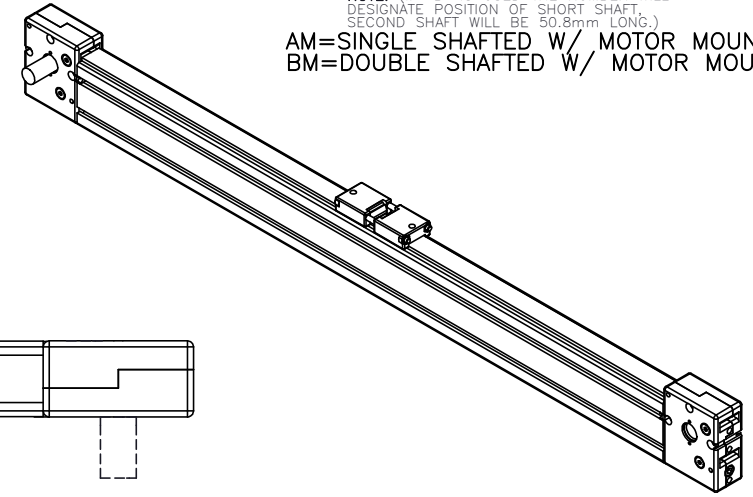
ENTER  
TRAVEL IN INCREMENTS OF 25mm

SELECT  
DRIVE SHAFT LOCATION\*

SHAFTING TYPE  
A0= SINGLE SHAFTED  
B0= DOUBLE SHAFTED

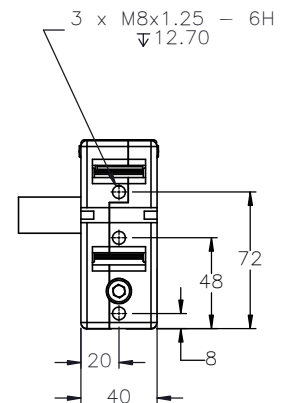
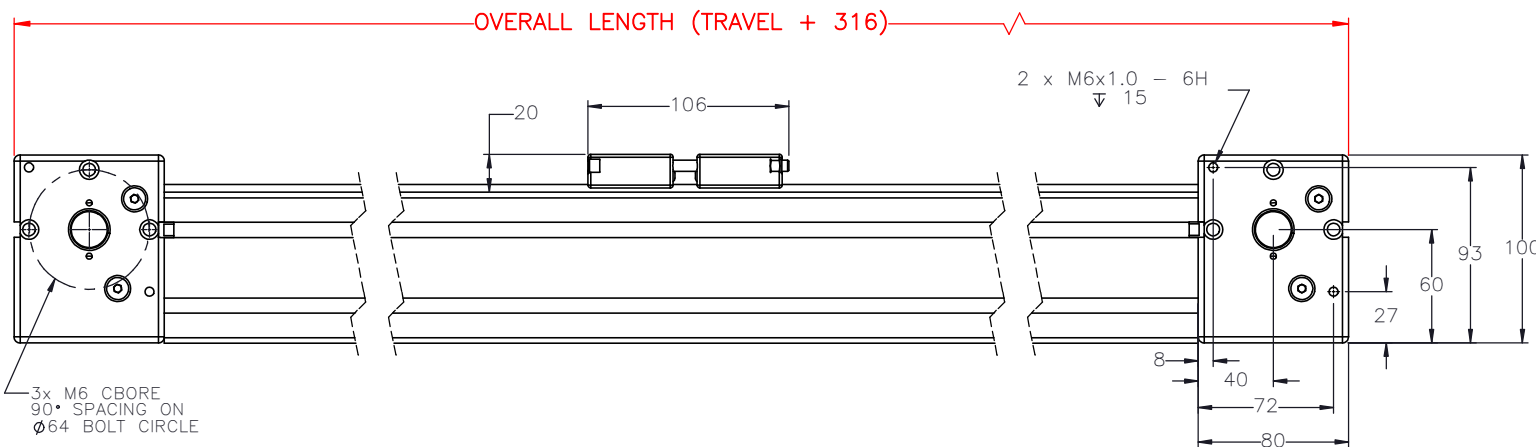
NOTE: (IF "B" IS USED THE NUMBER WILL  
DESIGNATE POSITION OF SHORT SHAFT.  
SECOND SHAFT WILL BE 50.8mm LONG.)

AM= SINGLE SHAFTED W/ MOTOR MOUNT  
BM= DOUBLE SHAFTED W/ MOTOR MOUNT



1\*

3\*



APPROVED: \_\_\_\_\_

DATE: \_\_\_\_\_



THIS DRAWING IS THE PROPERTY OF IPS. ANY  
REPRODUCTIONS SHALL BE FOR QUOTATION,  
MANUFACTURING OR PURCHASING PURPOSES ONLY.  
RELEASE OF DRAWINGS TO OTHER CONCERNS DOES NOT  
CONSTITUTE LICENSING IN ANY WAY. INFORMATION  
CONTAINED HEREIN IS PROPRIETARY AND CONFIDENTIAL.

DRAWN BY: — DATE: DD/MM/YYYY  
CHECKED BY: — DATE: DD/MM/YYYY  
LAST SAVED BY: — DATE: DD/MM/YYYY

UNLESS OTHERWISE SPECIFIED:  
DIMENSIONS ARE IN MILLIMETER  
TOLERANCES UNLESS NOTED  
OTHERWISE:  
.X ± .762  
.XX ± .254  
.XXX ± .127  
ANG ± 0°30'

SURFACE FINISH

BREAK ALL SHARP EDGES  
DIMENSIONAL LIMITS APPLY AFTER FINISHING  
THIRD ANGLE PROJECTION

MATERIAL:

FINISH:

SHEET

PART NUMBER

TITLE:  
IPS SINGLEBELT  
DRIVE 25

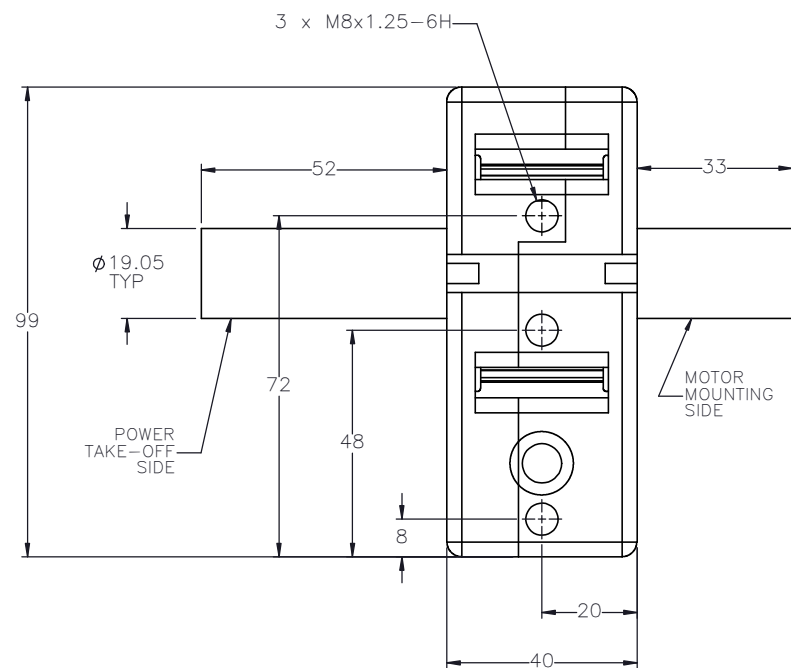
SCALE 1:1 SHEET SIZE C

1 OF 2

iSA-SB2

REV

SPECIFICATIONS ARE SUBJECT  
TO CHANGE WITHOUT NOTICE

[illegible]

UNLESS OTHERWISE SPECIFIED, DIMENSIONS ARE IN MILLIMETER. TOLERANCES UNLESS NOTED OTHERWISE:	$.X \pm .762$ $.XX \pm .254$ $.XXX \pm .127$ $ANG \pm 0.30^\circ$
---	--

SURFACE FINISH

	FINISH:
--	---------

SHEET

PART NUMBER
-------------

TITLE:  
IPS SINGLEBELT  
DRIVE 25

SCALE	1:1	SHEET SIZE	C
-------	-----	------------	---

jSA-SB2

REV	
-----	--

SPECIFICATIONS ARE SUBJECT  
TO CHANGE WITHOUT NOTICE.