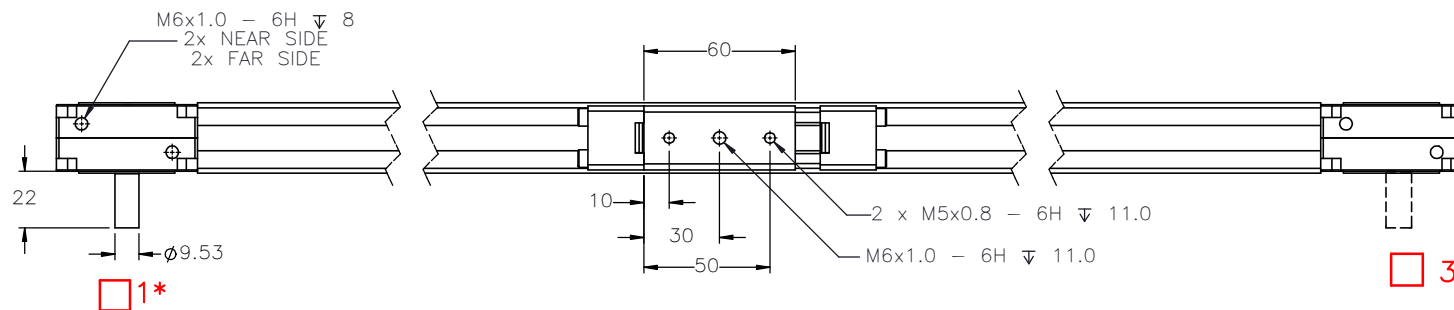
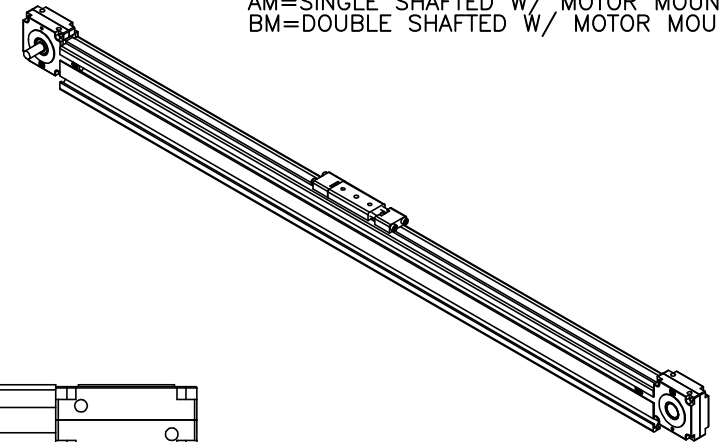


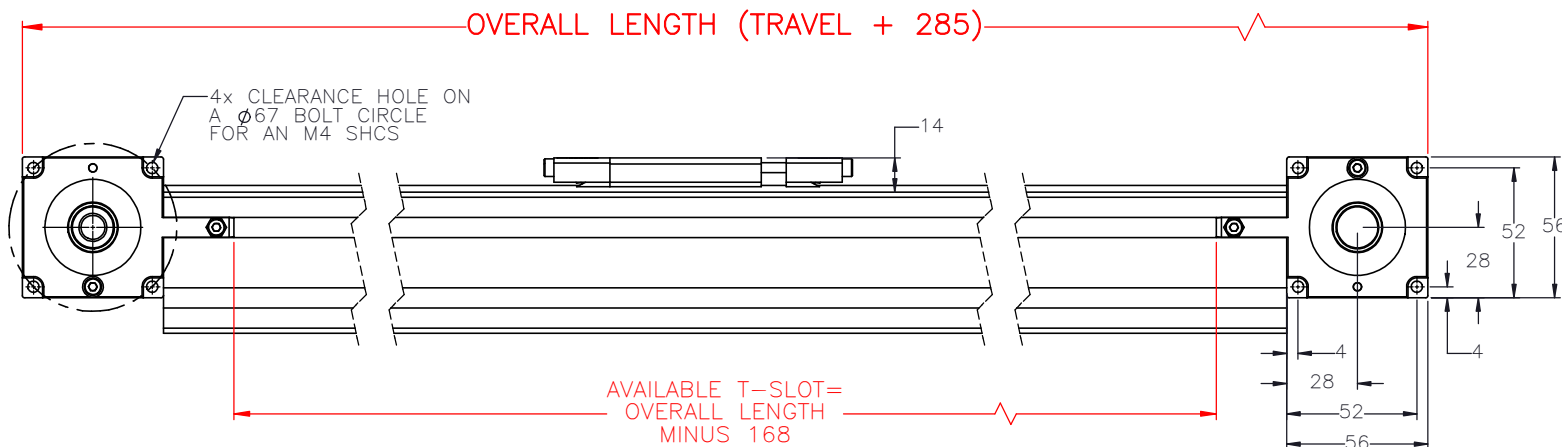
iSA-SB1-B-GB-

PULLEY PITCH DIAMETER	33.42mm (1.316")
PULLEY WIDTH	16.3mm (.640")
PULLEY MATERIAL	STEEL
BELT WEIGHT (kg)	((TRAVEL IN METERS x 2)+.51) x .04
TRAVEL PER REV.	105mm
TRAVEL MIN.	150mm
TRAVEL MAX.	5825mm
TENSION ASSY WEIGHT (kg)	0.08kg
SYSTEM WEIGHT (kg)	(TRAVEL IN METERS x 1.5) + 1.3

ENTER  
TRAVEL IN INCREMENTS OF 25mm  
SELECT  
DRIVE SHAFT LOCATION\*  
SHAFTING TYPE  
A0= SINGLE SHAFTED  
B0= DOUBLE SHAFTED  
AM= SINGLE SHAFTED W/ MOTOR MOUNT  
BM= DOUBLE SHAFTED W/ MOTOR MOUNT



3\*



APPROVED: \_\_\_\_\_

DATE: \_\_\_\_\_



DRAWN BY: -- DATE: DD/MM/YYYY  
CHECKED BY: -- DATE: DD/MM/YYYY  
LAST SAVED BY: -- DATE: DD/MM/YYYY  
UNLESS OTHERWISE SPECIFIED:  
DIMENSIONS ARE IN MILLIMETERS  
TOLERANCES UNLESS NOTED  
OTHERWISE:  
.X ± .762  
.XX ± .254  
.XXX ± .127  
ANG ± 0°30'

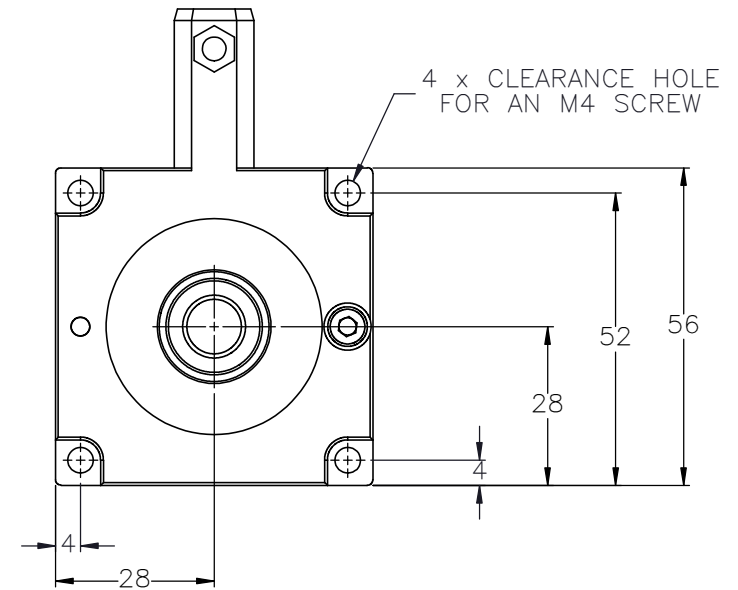
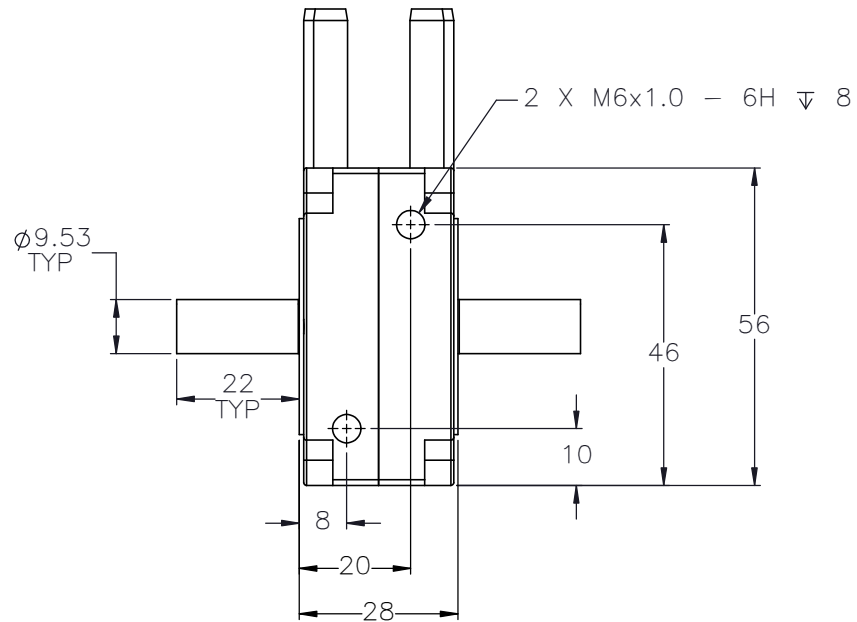
SURFACE FINISH  
BREAK ALL SHARP EDGES  
DIMENSIONAL LIMITS APPLY AFTER FINISHING  
THIRD ANGLE PROJECTION

MATERIAL:  
FINISH:  
SHEET 1 OF 2  
PART NUMBER

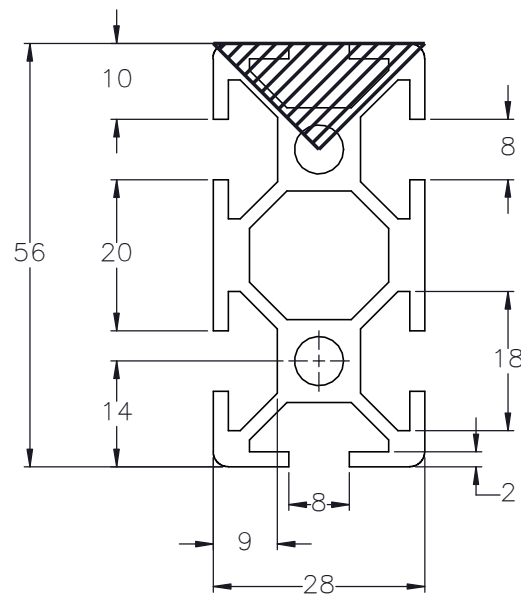
TITLE:  
IPS SINGLEBELT  
DRIVE 12  
SCALE 1:1  
SHEET SIZE C  
REV  
iSA-SB1


SPECIFICATIONS ARE SUBJECT  
TO CHANGE WITHOUT NOTICE

## DOUBLE SHAFTED PULLEY



## ACTUATOR BODY T-SLOT MOUNTING FEATURES



 <b>ips</b> INDUSTRIAL PROFILE SYSTEMS	DRAWN BY: — — — — —	DATE: DD/MM/YYYY	MATERIAL:		TITLE: IPS SINGLEBELT DRIVE 12	
	CHECKED BY: — — — — —	DATE: DD/MM/YYYY				
	LAST SAVED BY: — — — — —	DATE: DD/MM/YYYY				
	UNLESS OTHERWISE SPECIFIED, DIMENSIONS ARE IN MILLIMETERS. TOLERANCES: UNLESS NOTED OTHERWISE: .XX ± .762 .XX ± .254 .XXX ± .127 ANG ± 0°30'		FINISH:			
THIS DRAWING IS THE PROPERTY OF IPS. ANY REPRODUCTIONS SHALL BE FOR QUOTATION, MANUFACTURING, OR PURCHASING PURPOSES ONLY. RELEASE OF DRAWINGS TO OTHER CONCERNS DOES NOT CONSTITUTE LICENSING IN ANY WAY. INFORMATION CONTAINED HEREIN IS PROPRIETARY AND CONFIDENTIAL	SURFACE FINISH ✓		SHEET		PART NUMBER	SCALE 1:1   SHEET SIZE C
	BREAK ALL SHARP EDGES DIMENSIONAL LIMITS APPLY AFTER FINISHING		2 OF 2			REV
	THIRD ANGLE PROJECTION					iSA-SB1