

# iPG-084-XXX

## SINGLE STAGE HOLLOW OUTPUT PLANETARY GEARBOX

0.750" BORE  
(XXX = GEARBOX RATIO)

MOTOR INPUT SHAFT DIAMETER 32mm MAX

TORQUE SETTING BASED ON  
COUPLING SCREW SIZE

PLUG REF

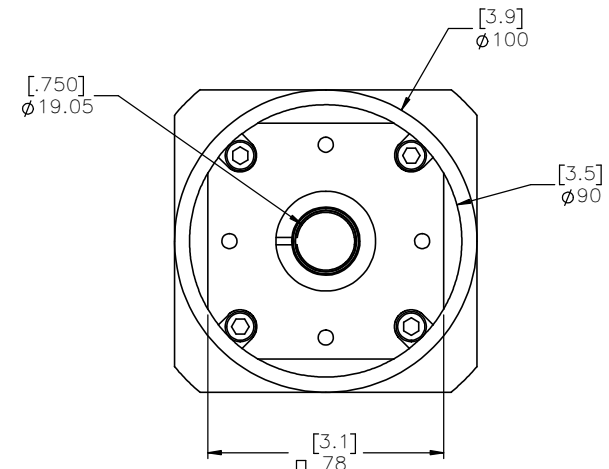
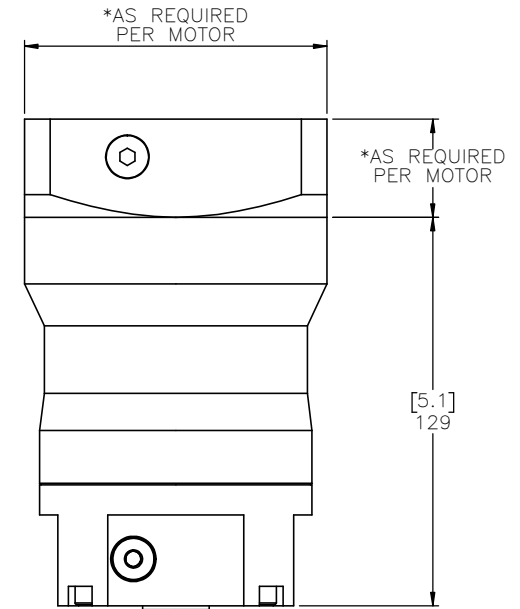
CLAMP SCREW TORQUE SETTING 40NM [350 IN-LBS]

### NOTES:

- 1.) MOTOR MANUFACTURER AND MODEL NUMBER REQUIRED TO PROPERLY SIZE THE MOTOR ADAPTOR PLATE. MAXIMUM MOTOR INPUT SHAFT DIAMETER IS 24mm.
- 2.) ADAPTOR PLATE SIZE WILL VARY BASED ON MOTOR SPECIFIED. OVERALL DIMENSIONS AND PLATE THICKNESS WILL BE DIFFERENT FROM VISUAL REPRESENTATION ABOVE
- 3.) MOTOR FLANGE BOLT CIRCLE PATTERN AND HOLE DIAMETER ALONG WITH MOTOR SHAFT DIAMETER AND LENGTH WILL DETERMINE THE FINAL SIZE OF THE ADAPTOR PLATE
- 4.) IPS MAKES EVERY EFFORT TO MATCH MOTOR DIMENSIONS TO MOTOR MANUFACTURER'S SPECIFICATIONS. THESE MANUFACTURER'S SPECIFICATIONS CAN CHANGE FROM TIME TO TIME WITHOUT NOTICE. IPS IS NOT RESPONSIBLE FOR ADAPTOR THAT DO NOT MATE WITH THE MOTORS IF REFERENCE DIMENSIONS HAVE CHANGED OR IF THE USER CHANGES MOTOR MODELS AFTER PURCHASE

GEARBOX RATIO	3:1	10:1	5:1	7:1
MPG PART NUMBER SUFFIX	003	010	005	007
NOMINAL OUTPUT TORQUE – Nm (lb-in)	45 (398)	60 (531)	56 (496)	60 (531)
MAXIMUM ACCELERATION TORQUE – Nm (lb-in)	90 (797)	92 (814)	109 (965)	100 (885)
NOMINAL INPUT SPEED – RPM	3000	3600	3400	3600
MAXIMUM INPUT SPEED – RPM	5500	6000	6000	6000
STANDARD OUTPUT BACKLASH – arcmin	<8	<8	<8	<8
WEIGHT – kg (lb)	3.8 (8.4)	3.8 (8.4)	3.8 (8.4)	3.8 (8.4)
MASS MOMENT OF INERTIA (STD INPUT)– kg/cm2	1.4	.87	1.0	.91
MASS MOMENT OF INERTIA (LARGE INPUT >24mm MOTOR SHAFT)– kg/cm2	3.0	2.5	2.6	2.5
EFFICIENCY AT LOAD	97%	97%	97%	97%

REVISION HISTORY			
REV.	DESCRIPTION	DATE	REVISED BY:



THIS DRAWING IS THE PROPERTY OF IPS.  
ANY REPRODUCTIONS SHALL BE FOR QUOTATION,  
MANUFACTURING, OR PURCHASING PURPOSES ONLY.  
RELEASE OF DRAWINGS TO OTHER CONCERNS DOES NOT  
CONSTITUTE LICENSING IN ANY WAY. INFORMATION  
CONTAINED HEREIN IS PROPRIETARY AND CONFIDENTIAL.

DRAWN BY: —	DATE: DD/MM/YYYY	MATERIAL:	TITLE: IPS 084 GEARBOX
CHECKED BY: —	DATE: DD/MM/YYYY	FINISH:	SCALE: 1:1
LAST SAVED BY: —	DATE: DD/MM/YYYY	UNLESS OTHERWISE SPECIFIED, DIMENSIONS ARE IN MILLIMETERS. TOLERANCES, UNLESS NOTED OTHERWISE: .XX ± .762 .XX ± .254 .XXX ± .127 ANG ± 0°30'	SHEET SIZE: C
SURFACE FINISH: BREAK ALL SHARP EDGES. DIMENSIONAL LIMITS APPLY AFTER FINISHING. THIRD ANGLE PROJECTION.		SHEET: 1 OF 1	PART NUMBER: iPG-084-XXXX