

iDC-R6S-E-BC-

PULLEY PITCH DIAMETER	47.75mm (1.880")
PULLEY WIDTH	28.9mm (1.138")
PULLEY MATERIAL	STEEL
BELT WEIGHT (kg)	$((\text{TRAVEL IN METERS} \times 2) + .82) \times .12$
TRAVEL PER REV.	150mm
TRAVEL MIN.	150mm
TRAVEL MAX.	5825mm
CART WEIGHT (kg)	0.59 PER CART
SYSTEM WEIGHT (kg)	$(\text{TRAVEL IN METERS} \times 3.9) + 5.1$

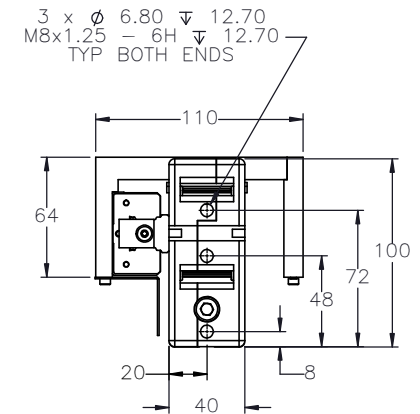
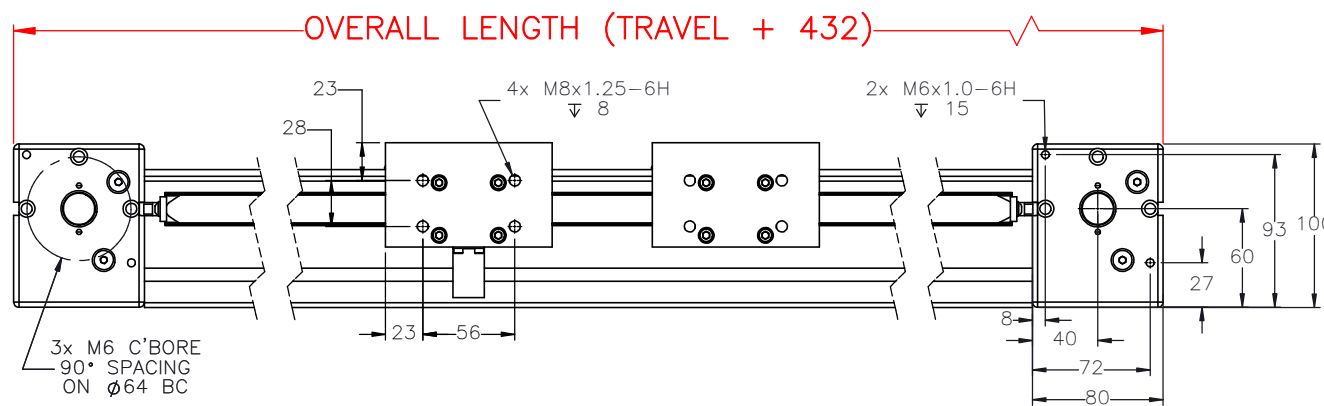
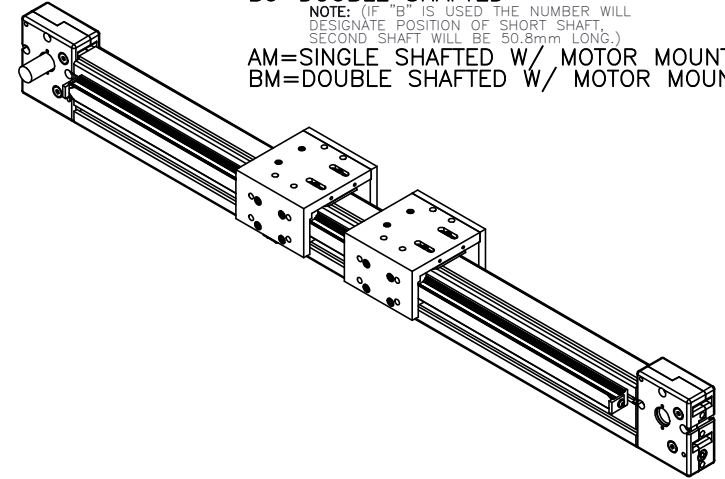
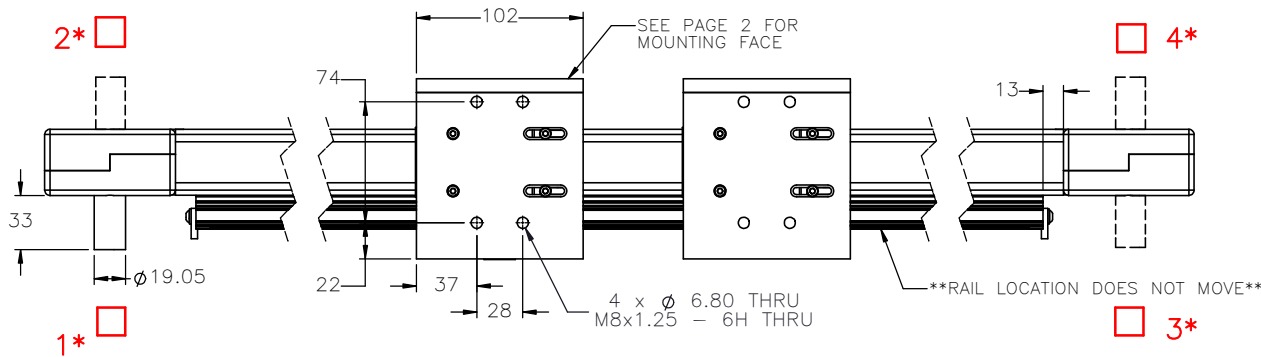
ENTER  
TRAVEL IN INCREMENTS OF 25mm

SELECT  
DRIVE SHAFT LOCATION\*

SHAFTING TYPE  
A0= SINGLE SHAFTED  
B0= DOUBLE SHAFTED

NOTE: (IF "B" IS USED THE NUMBER WILL  
DESIGNATE POSITION OF SHORT SHAFT.  
SECOND SHAFT WILL BE 50.8mm LONG.)

AM= SINGLE SHAFTED W/ MOTOR MOUNT  
BM= DOUBLE SHAFTED W/ MOTOR MOUNT



APPROVED: \_\_\_\_\_

DATE: \_\_\_\_\_

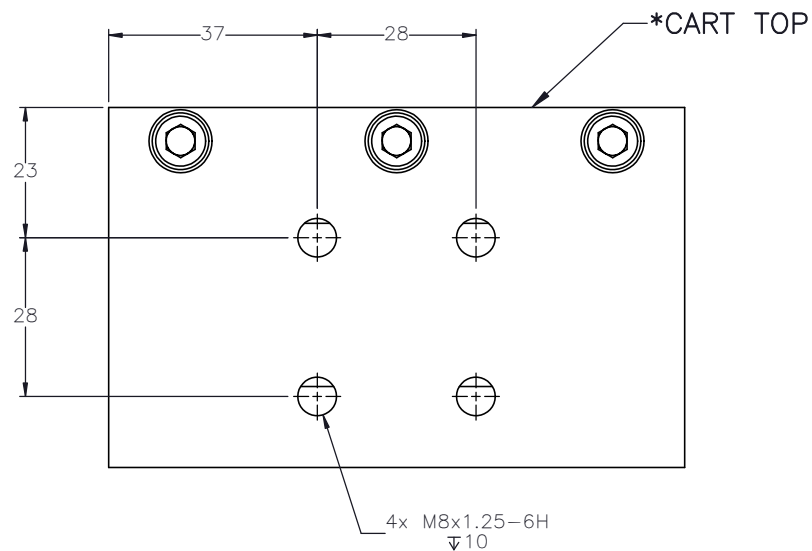


THIS DRAWING IS THE PROPERTY OF IPS. ANY  
REPRODUCTIONS SHALL BE FOR QUOTATION  
MANUFACTURING OR PURCHASING PURPOSES ONLY.  
RELEASE OF DRAWINGS TO OTHER CONCERNS DOES NOT  
CONSTITUTE LICENSING IN ANY WAY. INFORMATION  
CONTAINED HEREIN IS PROPRIETARY AND CONFIDENTIAL

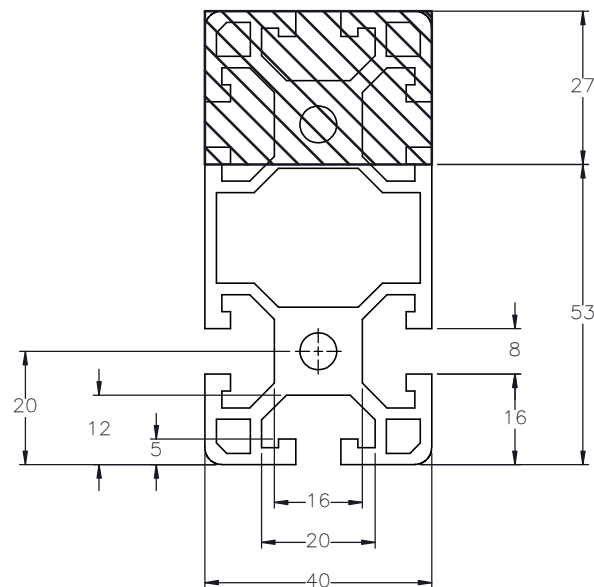
DRAWN BY: —	DATE: DD/MM/YYYY	MATERIAL:	TITLE: IPS 6 DUAL CART RAIL ACTUATOR
CHECKED BY: —	DATE: DD/MM/YYYY	FINISH:	SCALE 1:1 SHEET SIZE C
LAST SAVED BY: —	DATE: DD/MM/YYYY	SHEET 1 OF 2	PART NUMBER iDC-R6S
UNLESS OTHERWISE SPECIFIED, DIMENSIONS ARE IN INCHES. TOLERANCES UNLESS NOTED OTHERWISE:	.X ± .03 .XX ± .010 .XXX ± .005 ANG ± 0°30'	SURFACE FINISH BREAK ALL SHARP EDGES DIMENSIONAL LIMITS APPLY AFTER FINISHING THIRD ANGLE PROJECTION	REV

SPECIFICATIONS ARE SUBJECT  
TO CHANGE WITHOUT NOTICE

## CART MOUNTING FEATURES

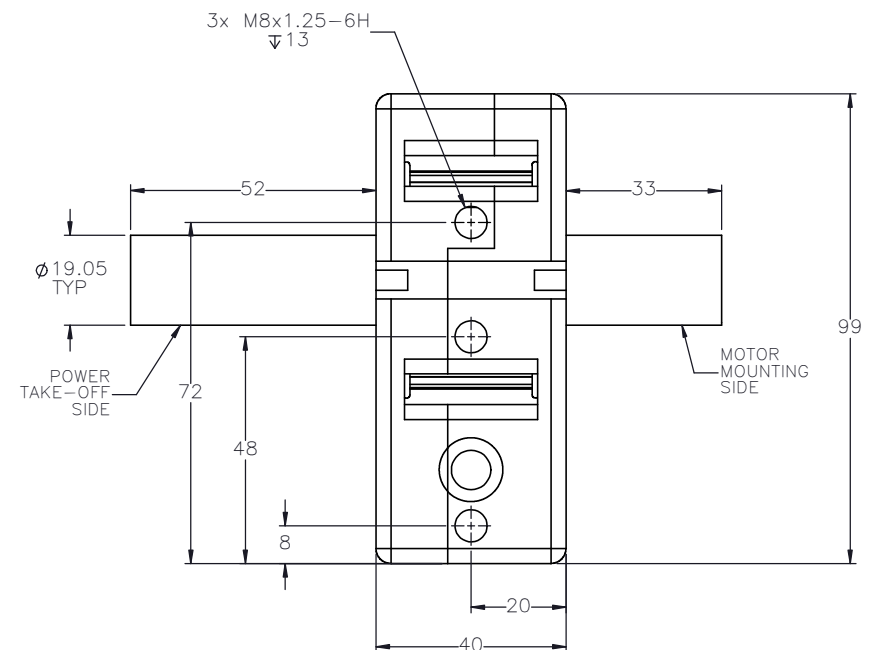
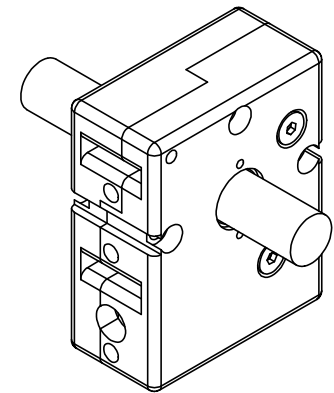


CUSTOMER ACCESSIBLE  
MOUNTING FEATURES,  
T-NUT SLOTS



SPECIFICATIONS ARE SUBJECT  
TO CHANGE WITHOUT NOTICE.

## DOUBLE SHAFTED PULLEY



DRAWN BY: --	DATE: DD/MM/YYYY
CHECKED BY: --	DATE: DD/MM/YYYY
LAST SAVED BY: --	DATE: DD/MM/YYYY
.X ± .03 .XX ± .010 .XXX ± .005 OTHERWISE: ANG ± 0°30'	

Y	MATERIAL:
Y	
Y	
	FINISH:

TITLE:  
IPS 6 DUAL  
CART RAIL  
ACTUATOR

SURFACE FINISH

BREAK ALL SHARP EDGES  
DIMENSIONAL LIMITS APPLY AFTER FINISHING

**THIRD ANGLE PROJECTION**

SHEET

	PART NUMBER
--	-------------

SCALE	1:1	SHEET SIZE	C
-------	-----	------------	---

iDC-R6S

REV