

iDC-R6D-E-BC-



ENTER  
TRAVEL IN INCREMENTS OF 25mm

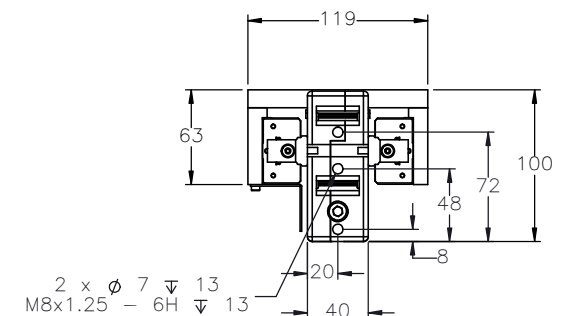
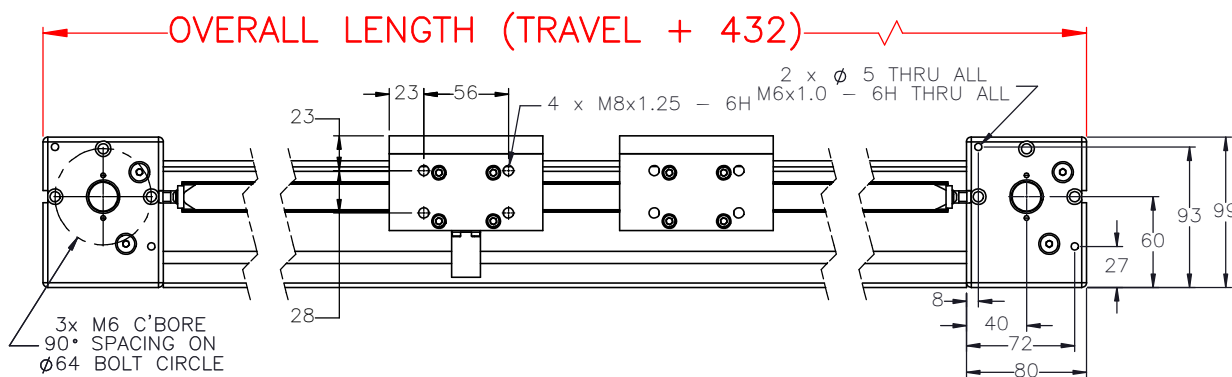
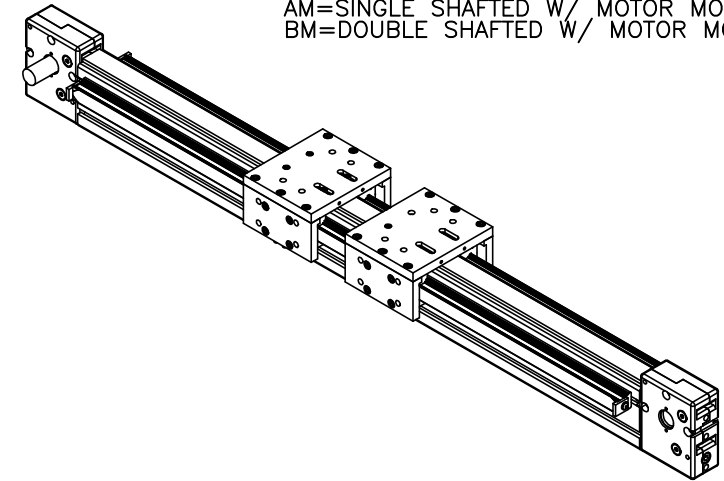
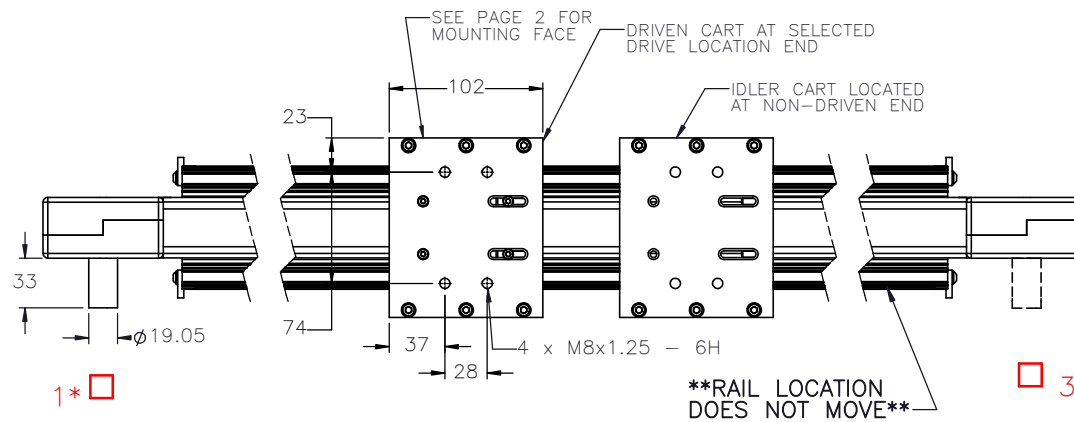
SELECT  
DRIVE SHAFT LOCATION\*

SHAFTING TYPE  
A0= SINGLE SHAFTED  
B0= DOUBLE SHAFTED

NOTE: (IF "B" IS USED THE NUMBER WILL  
DESIGNATE POSITION OF SHORT SHAFT.  
SECOND SHAFT WILL BE 50.8mm LONG.)

AM= SINGLE SHAFTED W/ MOTOR MOUNT  
BM= DOUBLE SHAFTED W/ MOTOR MOUNT

PULLEY PITCH DIAMETER	47.75mm (1.880")
PULLEY WIDTH	28.9mm (1.138")
PULLEY MATERIAL	STEEL
BELT WEIGHT (kg)	$((\text{TRAVEL IN METERS} \times 2) + .82) \times .12$
TRAVEL PER REV.	150mm
TRAVEL MIN.	150mm
TRAVEL MAX.	5825mm
CART WEIGHT (kg)	1.41 PER CART
SYSTEM WEIGHT (kg)	$(\text{TRAVEL IN METERS} \times 3.9) + 6.4$



APPROVED: \_\_\_\_\_

DATE: \_\_\_\_\_



THIS DRAWING IS THE PROPERTY OF IPS.  
ANY REPRODUCTIONS SHALL BE FOR QUOTATION,  
MANUFACTURING, OR PURCHASING PURPOSES ONLY.  
RELEASE OF DRAWINGS TO OTHER CONCERNS DOES NOT  
CONSTITUTE LICENSING IN ANY WAY. INFORMATION  
CONTAINED HEREIN IS PROPRIETARY AND CONFIDENTIAL.

DRAWN BY: — DATE: DD/MM/YYYY

CHECKED BY: — DATE: DD/MM/YYYY

LAST SAVED BY: — DATE: DD/MM/YYYY

UNLESS OTHERWISE SPECIFIED,  
DIMENSIONS ARE IN INCHES.  
TOLERANCES UNLESS NOTED  
OTHERWISE:

SURFACE FINISH

BREAK ALL SHARP EDGES  
DIMENSIONAL LIMITS APPLY AFTER FINISHING  
THIRD ANGLE PROJECTION

MATERIAL:

FINISH:

SHEET

1 OF 2

TITLE:  
IPS 6 DUAL  
CART RAIL  
ACTUATOR

SCALE 1:1

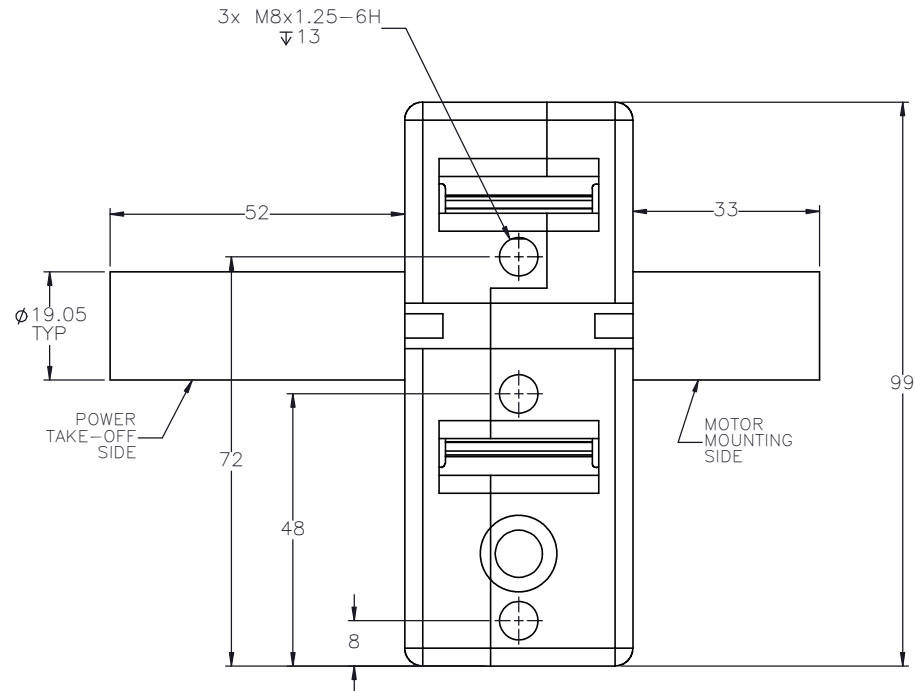
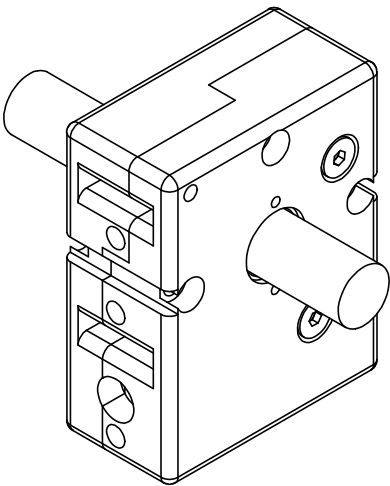
SHEET SIZE C

REV

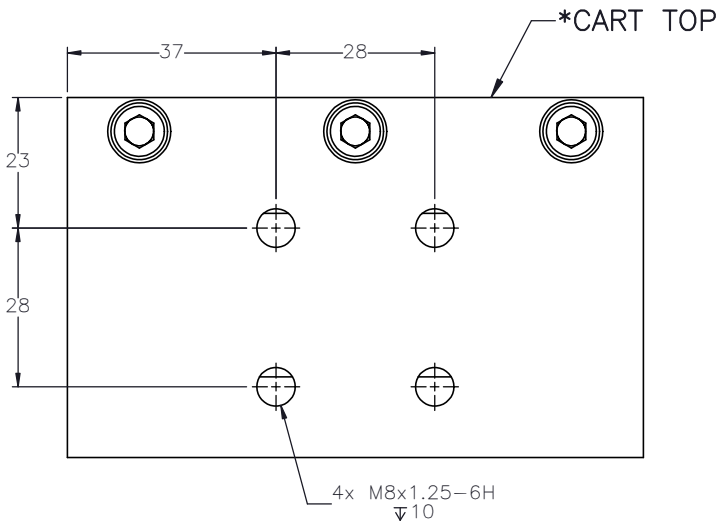
SPECIFICATIONS ARE SUBJECT  
TO CHANGE WITHOUT NOTICE

iDC-R6D

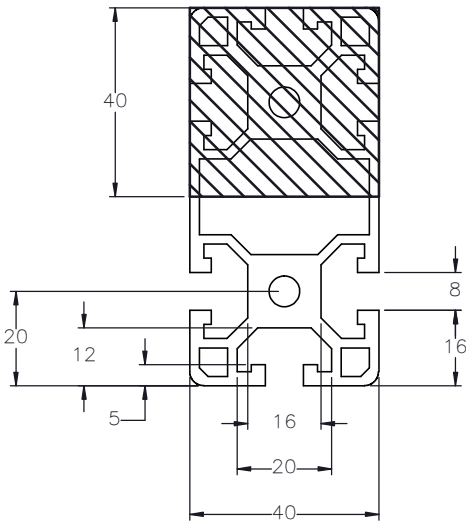
DOUBLE SHAFTED  
PULLEY



CART MOUNTING  
FEATURES



CUSTOMER ACCESSIBLE  
MOUNTING FEATURES,  
T-NUT SLOTS



DRAWN BY: —	DATE: DD/MM/YYYY	MATERIAL:	TITLE: IPS 6 DUAL CART RAIL ACTUATOR
CHECKED BY: —	DATE: DD/MM/YYYY	FINISH:	SCALE 1:1 SHEET SIZE C
LAST SAVED BY: —	DATE: DD/MM/YYYY		
UNLESS OTHERWISE SPECIFIED, DIMENSIONS ARE IN INCHES. TOLERANCES UNLESS NOTED OTHERWISE: .X ± .03 .XX ± .010 .XXX ± .005 ANG ± 0°30'		SURFACE FINISH	SHEET 2 OF 2
BREAK ALL SHARP EDGES DIMENSIONAL LIMITS APPLY AFTER FINISHING		THIRD ANGLE PROJECTION	REV

SPECIFICATIONS ARE SUBJECT TO CHANGE WITHOUT NOTICE