

iDC-R20-G-BC-

PULLEY PITCH DIAMETER	47.75mm (1.880")
PULLEY WIDTH	28.9mm (1.138")
PULLEY MATERIAL	STEEL
BELT WEIGHT (kg)	$((\text{TRAVEL IN METERS} \times 2) + 1.57) \times .12$
TRAVEL PER REV.	150mm
TRAVEL MIN.	150mm
TRAVEL MAX.	5650mm
CART WEIGHT (kg)	1.81 PER CART
SYSTEM WEIGHT (kg)	$(\text{TRAVEL IN METERS} \times 7.9) + 11.5$

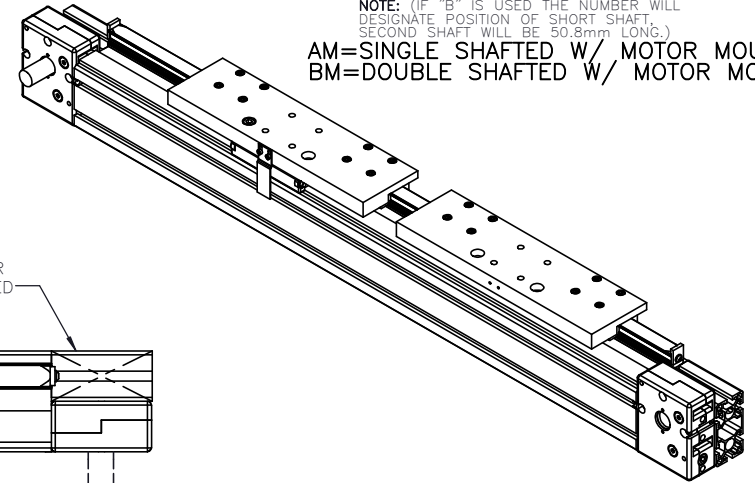
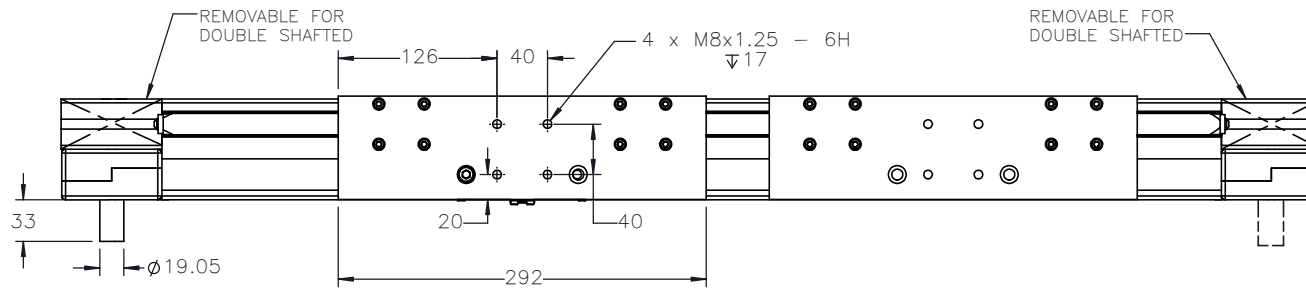
ENTER  
TRAVEL IN INCREMENTS OF 25mm

SELECT  
DRIVE SHAFT LOCATION

SHAFTING TYPE  
A0= SINGLE SHAFTED  
B0= DOUBLE SHAFTED

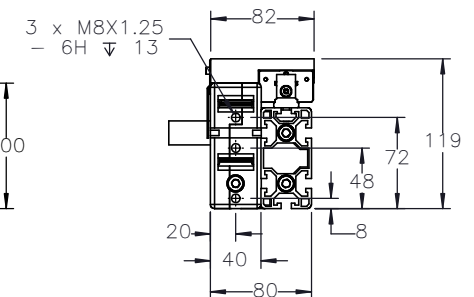
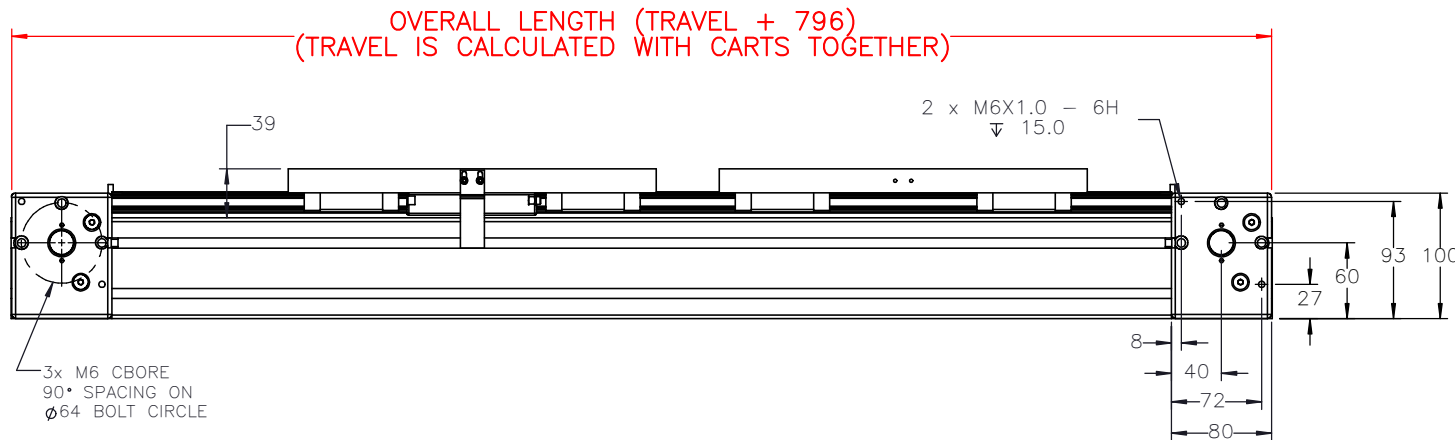
NOTE: (IF "B" IS USED THE NUMBER WILL  
DESIGNATE POSITION OF SHORT SHAFT.  
SECOND SHAFT WILL BE 50.8mm LONG.)

AM= SINGLE SHAFTED W/ MOTOR MOUNT  
BM= DOUBLE SHAFTED W/ MOTOR MOUNT



1\*

3\*



APPROVED: \_\_\_\_\_

DATE: \_\_\_\_\_



THIS DRAWING IS THE PROPERTY OF IPS. ANY  
REPRODUCTIONS SHALL BE FOR QUOTATION,  
MANUFACTURING OR PURCHASING PURPOSES ONLY.  
RELEASE OF DRAWINGS TO OTHER CONCERNS DOES NOT  
CONSTITUTE LICENSING IN ANY WAY. INFORMATION  
CONTAINED HEREIN IS PROPRIETARY AND CONFIDENTIAL.

MODEL BY: --- DATE: DD/MM/YYYY  
DRAWING BY: --- DATE: DD/MM/YYYY  
LAST SAVED BY: --- DATE: DD/MM/YYYY

UNLESS OTHERWISE SPECIFIED:  
DIMENSIONS ARE IN MILLIMETERS  
TOLERANCES UNLESS NOTED  
OTHERWISE:  
.X ± .762  
.XX ± .254  
.XXX ± .127  
ANG ± 0°30'

SURFACE FINISH  $\sqrt{\text{V}}$   
BREAK ALL SHARP EDGES  
DIMENSIONAL LIMITS APPLY AFTER FINISHING  
THIRD ANGLE PROJECTION

MATERIAL: \_\_\_\_\_  
FINISH: \_\_\_\_\_

SHEET 1 OF 2  
PART NUMBER

TITLE:  
IPS DUAL  
CART RAIL  
ACTUATOR

SCALE 1:1  
SHEET SIZE C  
REV 00

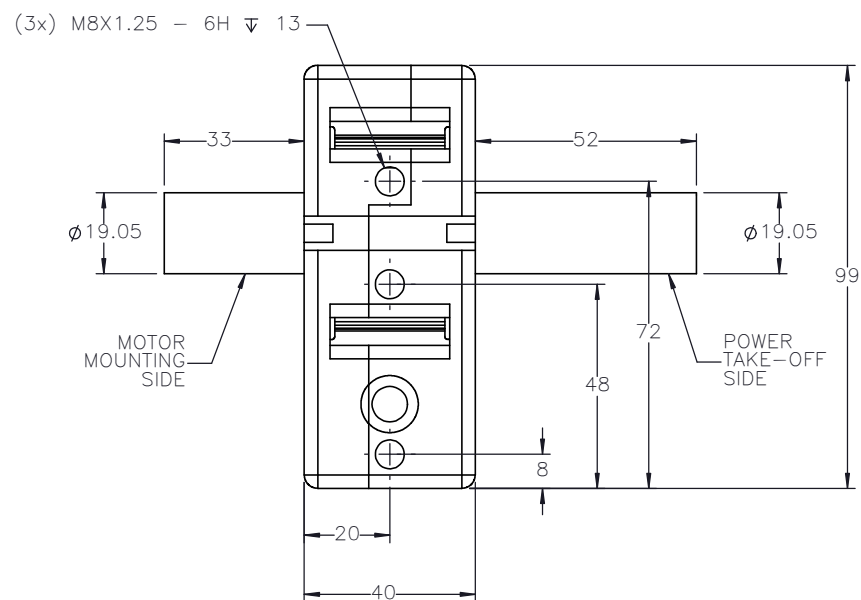
SPECIFICATIONS ARE SUBJECT  
TO CHANGE WITHOUT NOTICE

iDC-R20

Technical drawing of a mechanical part, likely a bracket or base plate, showing dimensions in millimeters (mm). The part is symmetrical about a vertical centerline.

**Dimensions:**

- Overall Width:** 80 mm
- Overall Height:** 80 mm
- Top Section:** A hatched rectangular area at the top, with a width of 80 mm and a height of 20 mm.
- Bottom Section:** A rectangular area at the bottom, with a width of 80 mm and a height of 20 mm.
- Central Section:** A rectangular area in the center, with a width of 32 mm and a height of 20 mm.
- Side Sections:** Two rectangular areas on the sides, each with a width of 16 mm and a height of 20 mm.
- Internal Features:** The part contains four circular holes, two in the top section and two in the bottom section, each with a diameter of 12 mm.
- Other Dimensions:** A dimension of 8 mm is shown for the distance from the centerline to the inner edge of the bottom section.



THIS DRAWING IS THE PROPERTY OF IPS. ANY REPRODUCTIONS SHALL BE FOR QUOTATION, MANUFACTURING, OR PURCHASING PURPOSES ONLY. RELEASE OF DRAWINGS TO OTHER CONCERNS DOES NOT CONSTITUTE LICENSING IN ANY WAY. INFORMATION CONTAINED HEREIN IS PROPRIETARY AND CONFIDENTIAL.

MODEL BY: --	DATE: DD/MM/YYYY
DRAWING BY: --	DATE: DD/MM/YYYY
LAST SAVED BY: --	DATE: DD/MM/YYYY
.X ± .762 .XX ± .254 .XXX ± .127 OTHERWISE: ANG ± 0°30'	

SURFACE FINISH  $\sqrt{6.3}$   
BREAK ALL SHARP EDGES  
DIMENSIONAL LIMITS APPLY AFTER FINISHING  
THIRD ANGLE PROJECTION

Y	MATERIAL:
Y	
Y	
	FINISH:

SHEET

PART NUMBER
-------------

TITLE:  
IPS DUAL  
CART RAIL  
ACTUATOR

SCALE	1:1	SHEET SIZE	C
REV			

iDC-R20

00