

iDC-R15-B-AB-



ENTER  
TRAVEL IN INCREMENTS OF 25mm

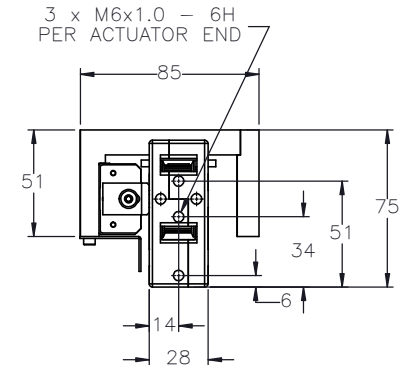
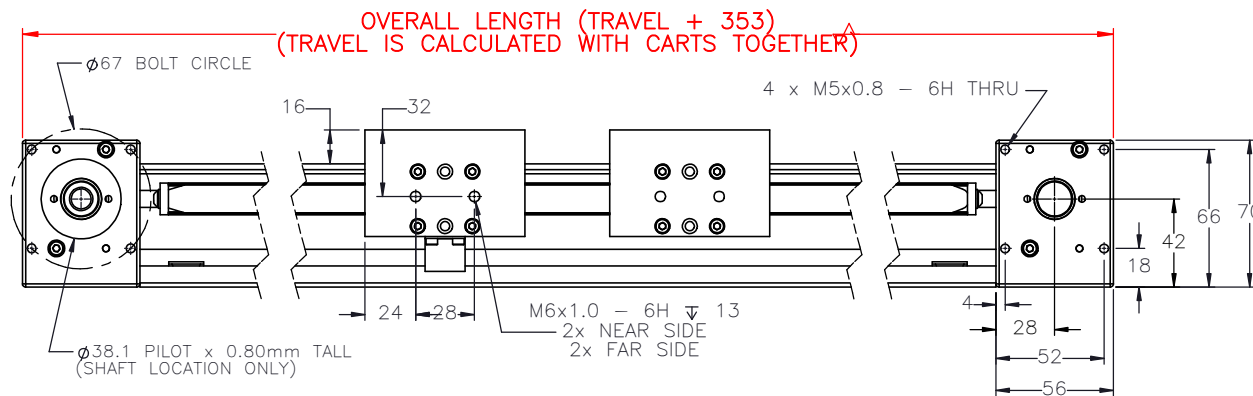
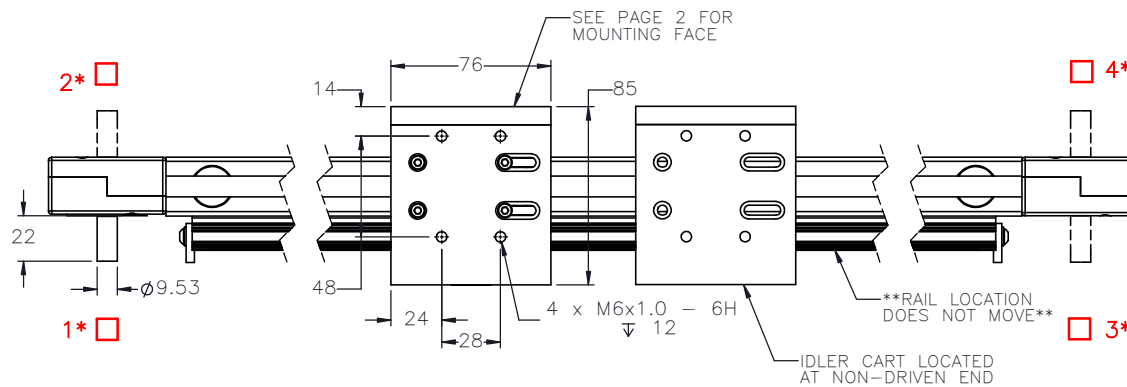
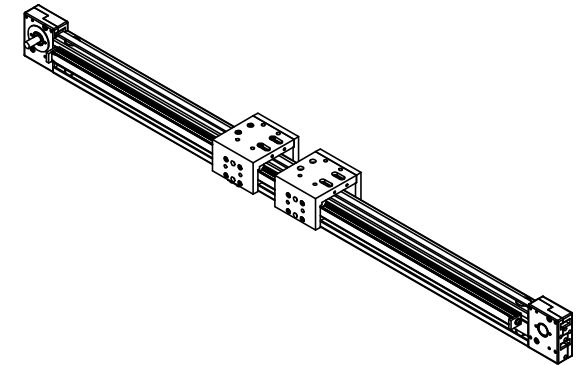
SELECT  
DRIVE SHAFT LOCATION\*

SHAFTING TYPE  
A0= SINGLE SHAFTED  
B0= DOUBLE SHAFTED

NOTE: (IF "B" IS USED THE NUMBER WILL  
DESIGNATE POSITION OF THE BOSS ON THE PULLEY)

AM= SINGLE SHAFTED W/ MOTOR MOUNT  
BM= DOUBLE SHAFTED W/ MOTOR MOUNT

PULLEY PITCH DIAMETER	33.42mm (1.316")
PULLEY WIDTH	16.3mm (.642")
PULLEY MATERIAL	STEEL
BELT WEIGHT (kg)	$((\text{TRAVEL IN METERS} \times 2) + .69) \times .04$
TRAVEL PER REV.	105mm
TRAVEL MIN.	150mm
TRAVEL MAX.	3850mm
CART WEIGHT (kg)	0.36 PER CART
SYSTEM WEIGHT (kg)	$(\text{TRAVEL IN METERS} \times 3.1) + 2.6$



APPROVED: \_\_\_\_\_

DATE: \_\_\_\_\_



THIS DRAWING IS THE PROPERTY OF IPS. ANY  
REPRODUCTIONS SHALL BE FOR QUOTATION  
MANUFACTURING OR PURCHASING PURPOSES ONLY.  
RELEASE OF DRAWINGS TO OTHER CONCERNS DOES NOT  
CONSTITUTE LICENSING IN ANY WAY. INFORMATION  
CONTAINED HEREIN IS PROPRIETARY AND CONFIDENTIAL

DRAWN BY: — DATE: DD/MM/YYYY  
CHECKED BY: — DATE: DD/MM/YYYY  
LAST SAVED BY: — DATE: DD/MM/YYYY

UNLESS OTHERWISE SPECIFIED,  
DIMENSIONS ARE IN INCHES.  
TOLERANCES UNLESS NOTED  
OTHERWISE:  
.X ± .03  
.XX ± .010  
.XXX ± .005  
ANG ± 0°30'

SURFACE FINISH ☒  
BREAK ALL SHARP EDGES  
DIMENSIONAL LIMITS APPLY AFTER FINISHING  
THIRD ANGLE PROJECTION

MATERIAL:  
FINISH:

SHEET 1 OF 2  
PART NUMBER

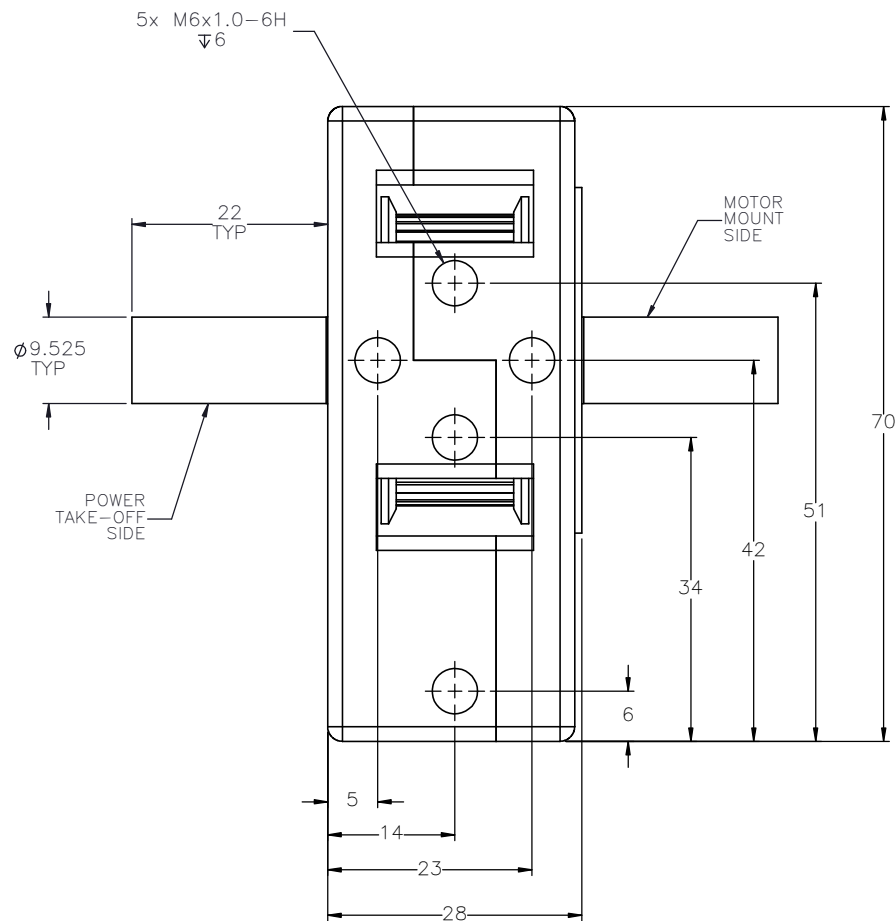
TITLE:  
IPS DUAL  
CART R15 RAIL  
ACTUATOR

SCALE 1:1  
SHEET SIZE C  
REV

SPECIFICATIONS ARE SUBJECT  
TO CHANGE WITHOUT NOTICE

iDC-R15

A technical line drawing of a mechanical component, possibly a motor or actuator, shown from a side perspective. The component has a rectangular body with a circular flange on the right side. A central shaft extends from the flange. The flange features a central circular opening with a smaller inner circle, and several mounting holes are visible around its perimeter. The body of the component has a recessed area on the top and a protruding section on the left side.



Technical drawing of the top view of a cart. The drawing shows a rectangular plate with dimensions 24 and 28. There are three hexagonal holes along the top edge, with a center-to-center distance of 24 between the first two and 28 between the last two. There are four circular holes arranged in a 2x2 grid in the center. Dimensions 16 and 15 are shown for the vertical spacing. A leader line points to the top edge with the text '\*CART TOP'. Another leader line points to one of the circular holes with the text '4x M6x1.0-6H' and a downward arrow.

Technical drawing of a mechanical part, showing a cross-section with dimensions. The part has a total height of 32 and a total width of 28. The top section is a square with a central circular hole. The bottom section is a T-shaped base with a central circular hole. The distance from the top of the part to the center of the bottom hole is 14. The distance from the center of the bottom hole to the bottom edge is 18. The distance from the center of the bottom hole to the left and right edges of the base is 9. The distance from the center of the bottom hole to the center of the top hole is 8. The top section is hatched with diagonal lines.



THIS DRAWING IS THE PROPERTY OF IPS. ANY  
REPRODUCTIONS SHALL BE FOR QUOTATION,  
MANUFACTURING, OR PURCHASING PURPOSES ONLY.  
RELEASE OF DRAWINGS TO OTHER CONCERNS DOES NOT  
CONSTITUTE LICENSING IN ANY WAY. INFORMATION  
CONTAINED HEREIN IS PROPRIETARY AND CONFIDENTIAL

DRAWN BY: --	DATE: DD/MM/YYYY
CHECKED BY: --	DATE: DD/MM/YYYY
LAST SAVED BY: --	DATE: DD/MM/YYYY
.X ± .03 .XX ± .010 .XXX ± .005 OTHERWISE: ANG ± 0°30'	

SURFACE FINISH  $\checkmark$ <sup>6.3</sup>  
BREAK ALL SHARP EDGES  
DIMENSIONAL LIMITS APPLY AFTER FINISHING  
THIRD ANGLE PROJECTION

Y	MATERIAL:
Y	
Y	
	FINISH:

SHEET	PART NUMBER
2 OF 2	

TITLE:  
IPS DUAL  
CART R15 RAIL  
ACTUATOR

SCALE 1:1	SHEET SIZE C
iDC-R15	REV

SPECIFICATIONS ARE SUBJECT  
TO CHANGE WITHOUT NOTICE