

iDC-M6S-E-BC-

PULLEY PITCH DIAMETER	47.75mm (1.880")
PULLEY WIDTH	28.9mm (1.138")
PULLEY MATERIAL	STEEL
BELT WEIGHT (kg)	$((\text{TRAVEL IN METERS} \times 2) + .85) \times .12$
TRAVEL PER REV.	150mm
TRAVEL MIN.	150mm
TRAVEL MAX.	5825mm
CART WEIGHT (kg)	1.59 PER CART
SYSTEM WEIGHT (kg)	$(\text{TRAVEL IN METERS} \times 3.9) + 4.7$

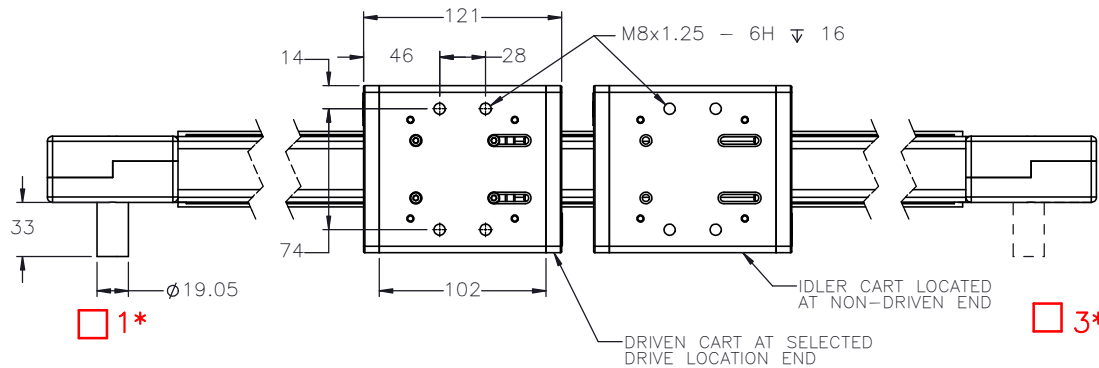
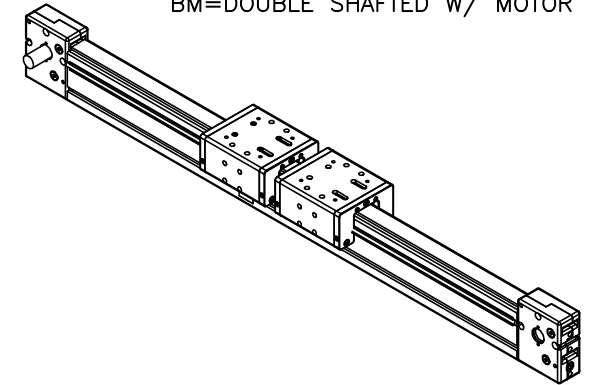
ENTER
TRAVEL IN INCREMENTS OF 25mm

SELECT
DRIVE SHAFT LOCATION*

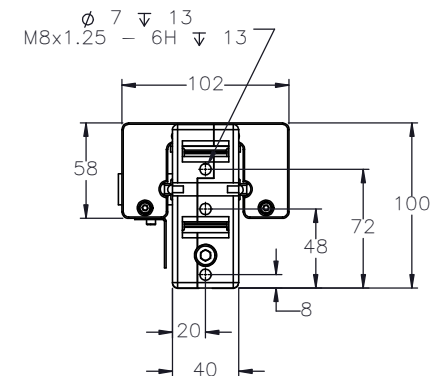
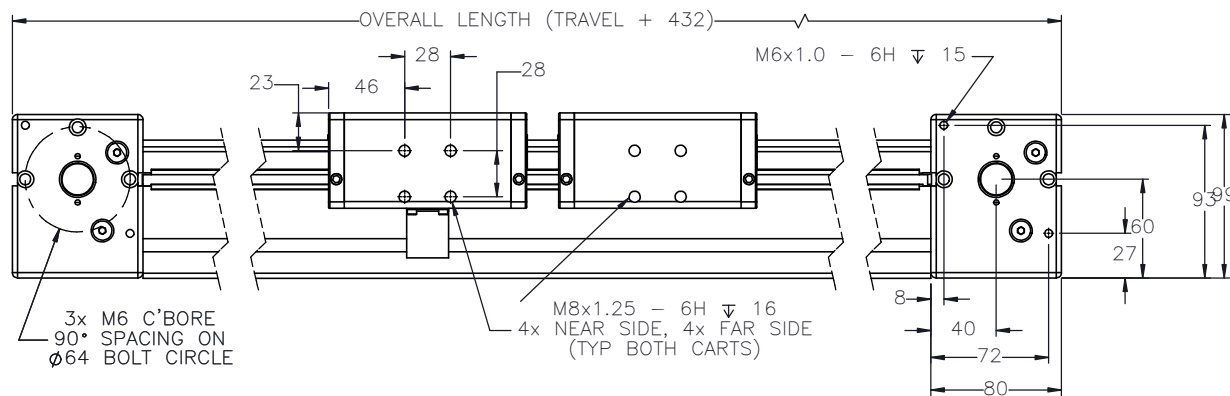
SHAFTING TYPE
A0= SINGLE SHAFTED
B0= DOUBLE SHAFTED

NOTE: (IF "B" IS USED THE NUMBER WILL
DESIGNATE POSITION OF SHORT SHAFT.
SECOND SHAFT WILL BE 50.8mm LONG.)

AM= SINGLE SHAFTED W/ MOTOR MOUNT
BM= DOUBLE SHAFTED W/ MOTOR MOUNT



3*



APPROVED: _____

DATE: _____



DRAWN BY: — DATE: DD/MM/YYYY
CHECKED BY: — DATE: DD/MM/YYYY
LAST SAVED BY: — DATE: DD/MM/YYYY

MATERIAL:

FINISH:

UNLESS OTHERWISE SPECIFIED,
DIMENSIONS ARE IN INCHES.
TOLERANCES UNLESS NOTED
OTHERWISE:
.X \pm .03
.XX \pm .010
.XXX \pm .005
ANG \pm 0°30'

SURFACE FINISH ∇

BREAK ALL SHARP EDGES
DIMENSIONAL LIMITS APPLY AFTER FINISHING
THIRD ANGLE PROJECTION

SHEET

PART NUMBER

TITLE:
IPS 6 DUAL
CART ACTUATOR

SCALE 1:1 SHEET SIZE C

1 OF 2

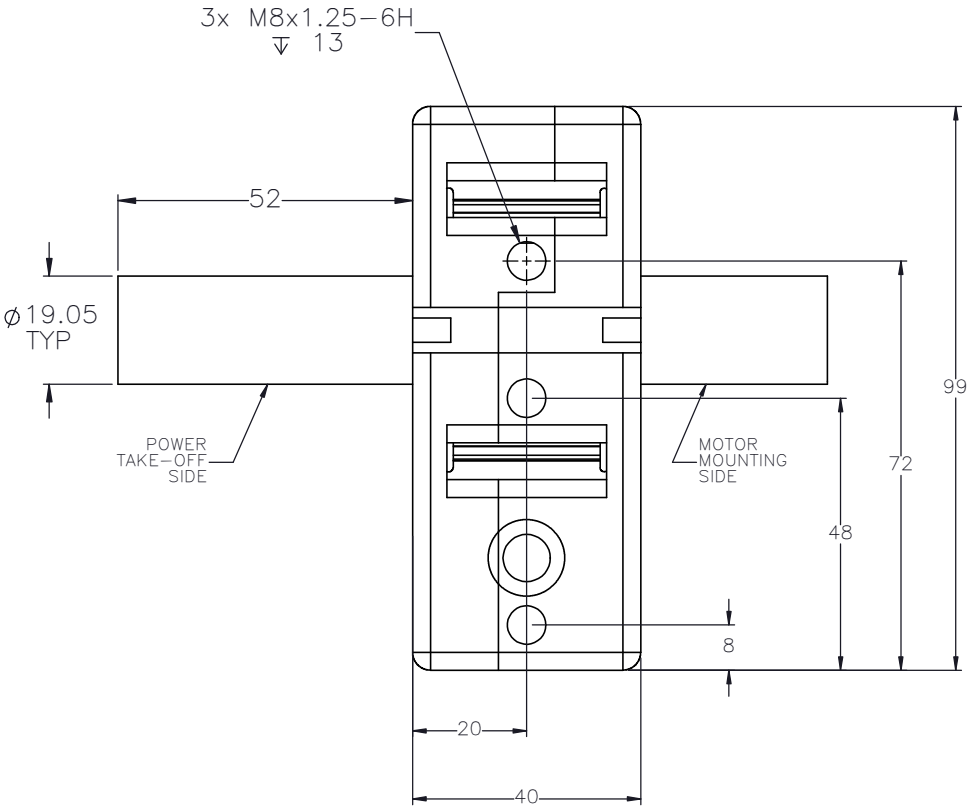
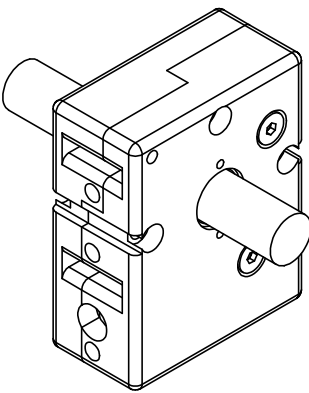
iDC-M6S

REV

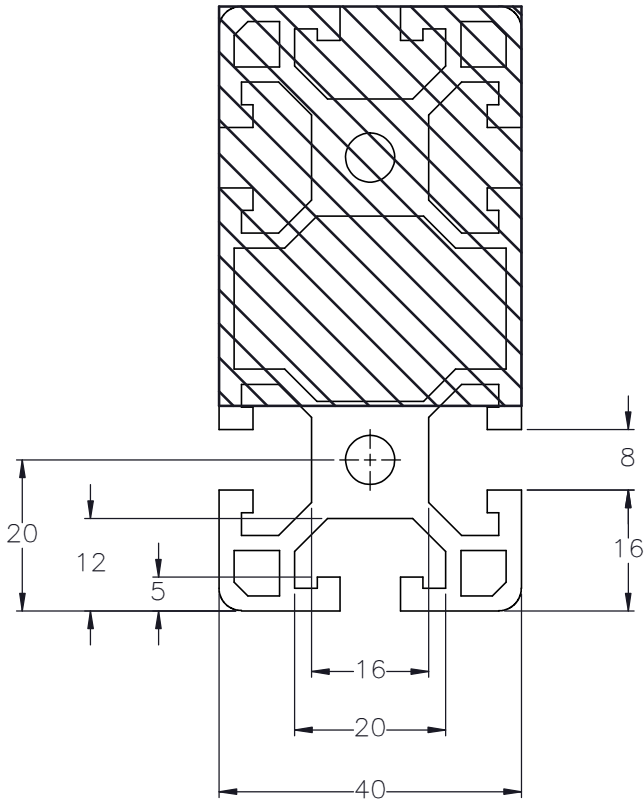
SPECIFICATIONS ARE SUBJECT
TO CHANGE WITHOUT NOTICE

THIS DRAWING IS THE PROPERTY OF IPS.
ANY REPRODUCTIONS SHALL BE FOR QUOTATION,
MANUFACTURING, OR PURCHASING PURPOSES ONLY.
RELEASE OF DRAWINGS TO OTHER CONCERNS DOES NOT
CONSTITUTE LICENSING IN ANY WAY. INFORMATION
CONTAINED HEREIN IS PROPRIETARY AND CONFIDENTIAL

DOUBLE SHAFTED
PULLEY



CUSTOMER ACCESSIBLE
MOUNTING FEATURES,
T-NUT SLOTS



DRAWN BY: --	DATE: DD/MM/YYYY	MATERIAL:
CHECKED BY: --	DATE: DD/MM/YYYY	
LAST SAVED BY: --	DATE: DD/MM/YYYY	
UNLESS OTHERWISE SPECIFIED, DIMENSIONS ARE IN INCHES. TOLERANCES UNLESS NOTED OTHERWISE:		FINISH:
.X ± .03 .XX ± .010 .XXX ± .005 ANG ± 0°30'		

SURFACE FINISH	BREAK ALL SHARP EDGES
DIMENSIONAL LIMITS APPLY AFTER FINISHING	
THIRD ANGLE PROJECTION	

SHEET	PART NUMBER
2 OF 2	

TITLE:	IPS 6 DUAL CART ACTUATOR
SCALE	1:1
SHEET SIZE	C
REV	

SPECIFICATIONS ARE SUBJECT
TO CHANGE WITHOUT NOTICE