

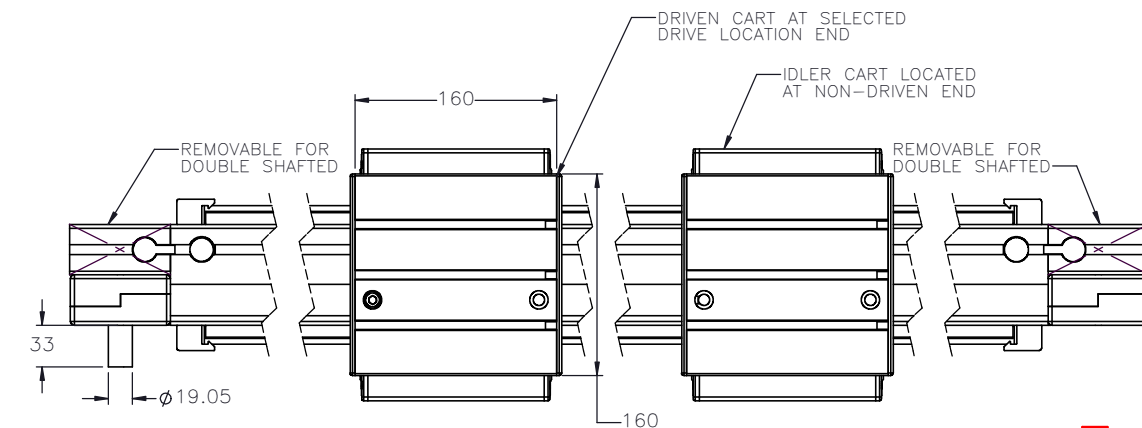
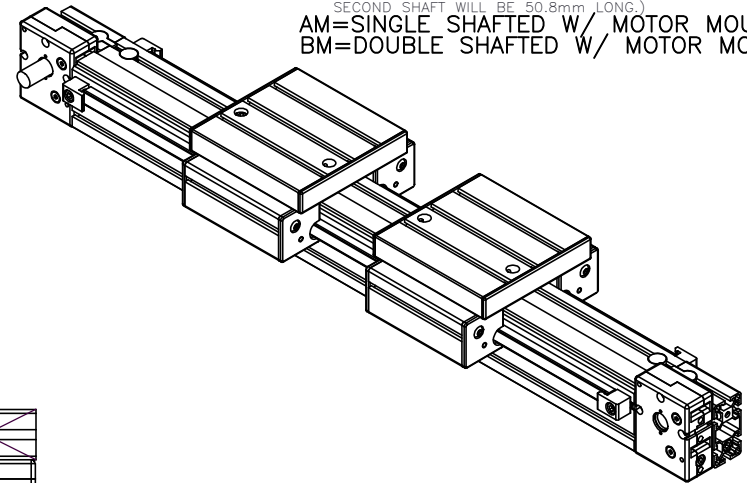
iDC-14S-G-BC-

PULLEY PITCH DIAMETER	47.75mm (1.880")
PULLEY WIDTH	28.9mm (1.138")
PULLEY MATERIAL	STEEL
BELT WEIGHT (kg)	$((\text{TRAVEL IN METERS} \times 2) + 1.16) \times .12$
TRAVEL PER REV.	150mm
TRAVEL MIN.	150mm
TRAVEL MAX.	5725mm
CART WEIGHT (kg)	3.54 PER CART
SYSTEM WEIGHT (kg)	$(\text{TRAVEL IN METERS} \times 6.1) + 12.4$

ENTER
TRAVEL IN INCREMENTS OF 25mm
SELECT
DRIVE SHAFT LOCATION*

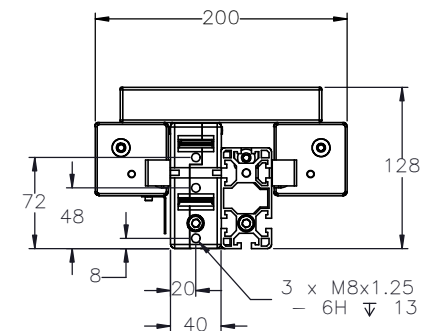
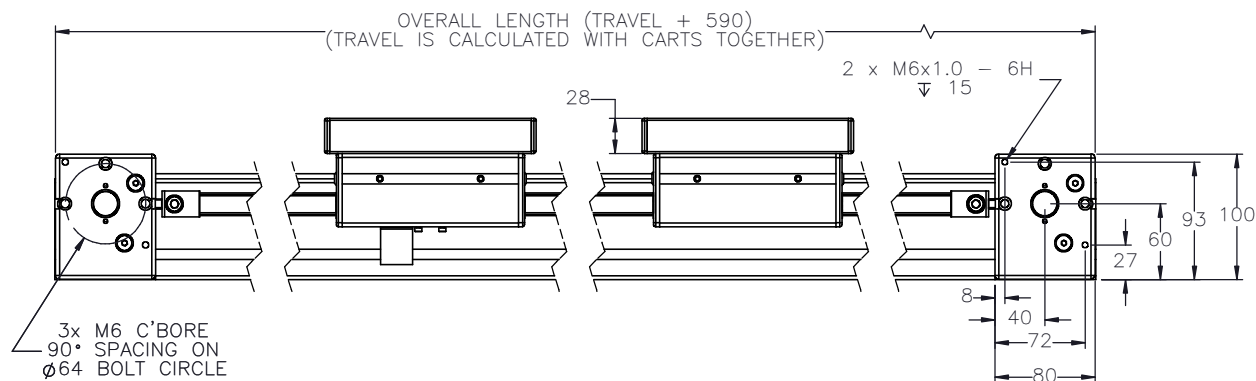
SHAFTING TYPE
A0= SINGLE SHAFTED
B0= DOUBLE SHAFTED

NOTE: (IF "B" IS USED THE NUMBER WILL
DESIGNATE POSITION OF SHORT SHAFT.
SECOND SHAFT WILL BE 50.8mm LONG.)
AM= SINGLE SHAFTED W/ MOTOR MOUNT
BM= DOUBLE SHAFTED W/ MOTOR MOUNT



1*

3*



APPROVED: _____

DATE: _____



THIS DRAWING IS THE PROPERTY OF IPS. ANY
REPRODUCTIONS SHALL BE FOR QUOTATION
MANUFACTURING OR PURCHASING PURPOSES ONLY.
RELEASE OF DRAWINGS TO OTHER CONCERNS DOES NOT
CONSTITUTE LICENSING IN ANY WAY. INFORMATION
CONTAINED HEREIN IS PROPRIETARY AND CONFIDENTIAL

DRAWN BY: — DATE: DD/MM/YYYY
CHECKED BY: — DATE: DD/MM/YYYY
LAST SAVED BY: — DATE: DD/MM/YYYY

UNLESS OTHERWISE SPECIFIED,
DIMENSIONS ARE IN INCHES.
TOLERANCES UNLESS NOTED
OTHERWISE:
.X ± .03
.XX ± .010
.XXX ± .005
ANG ± 0°30'

SURFACE FINISH
BREAK ALL SHARP EDGES
DIMENSIONAL LIMITS APPLY AFTER FINISHING
THIRD ANGLE PROJECTION

MATERIAL:
FINISH:

SHEET
PART NUMBER

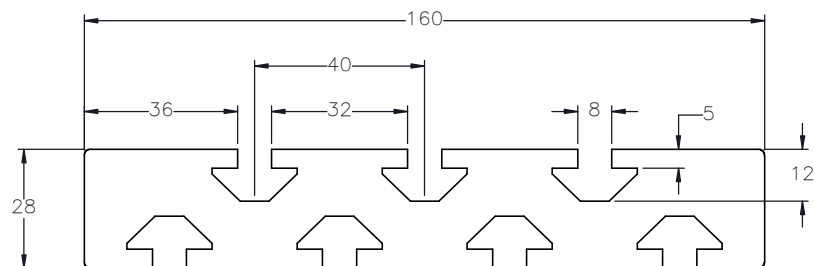
1 OF 2

TITLE:
IPS 14S
ACTUATOR

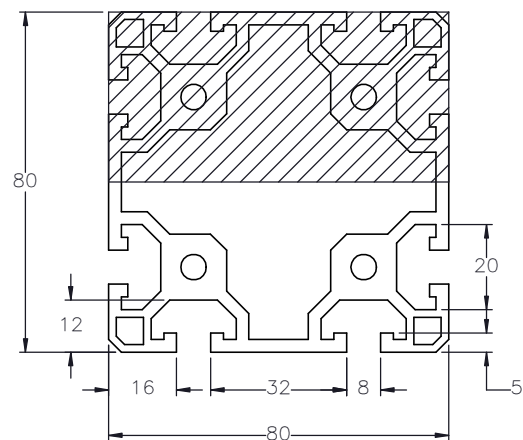
SCALE 1:1 SHEET SIZE C
iDC-14S

SPECIFICATIONS ARE SUBJECT
TO CHANGE WITHOUT NOTICE

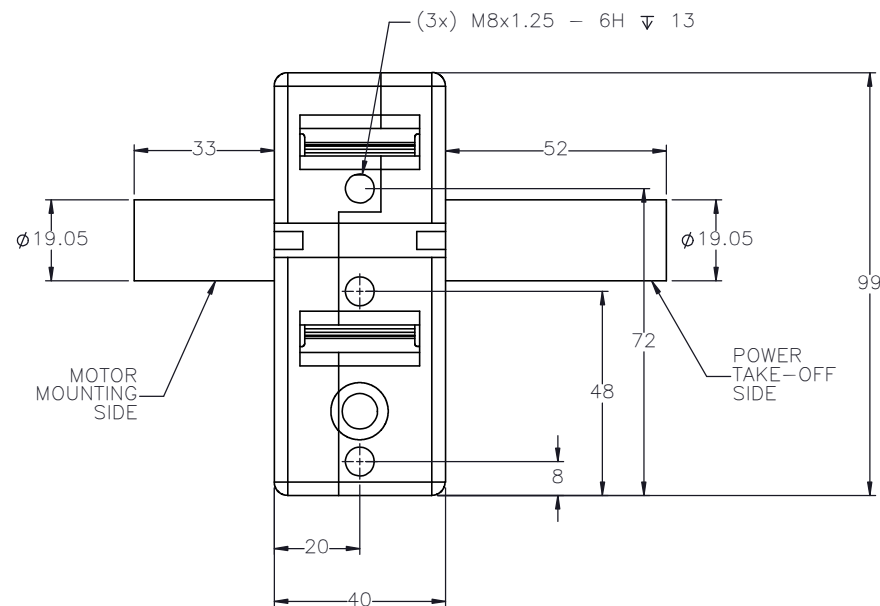
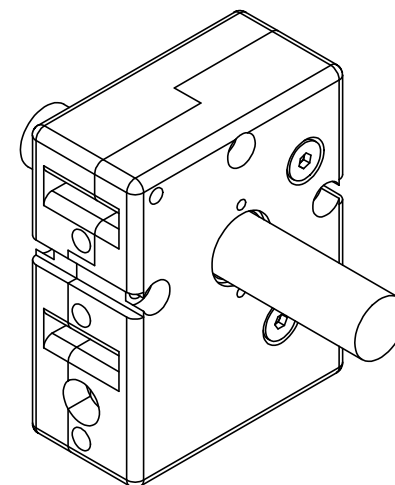
CART MOUNTING FEATURES T-NUT SLOTS



ACTUATOR BODY MOUNTING FEATURES T-NUT SLOTS



DOUBLE SHAFTED PULLEY



THIS DRAWING IS THE PROPERTY OF IPS. ANY REPRODUCTIONS SHALL BE FOR QUOTATION, MANUFACTURING OR PURCHASING PURPOSES ONLY. RELEASE OF DRAWINGS TO OTHER CONCERNS DOES NOT CONSTITUTE LICENSING IN ANY WAY. INFORMATION CONTAINED HEREIN IS PROPRIETARY AND CONFIDENTIAL.

DRAWN BY: — DATE: DD/MM/YYYY
CHECKED BY: — DATE: DD/MM/YYYY
LAST SAVED BY: — DATE: DD/MM/YYYY

UNLESS OTHERWISE SPECIFIED,
DIMENSIONS ARE IN INCHES.
TOLERANCES UNLESS NOTED
OTHERWISE:

.X ± .03
.XX ± .010
.XXX ± .005
ANG ± 0°30'

SURFACE FINISH

BREAK ALL SHARP EDGES
DIMENSIONAL LIMITS APPLY AFTER FINISHING
THIRD ANGLE PROJECTION

MATERIAL:
PFL 80X80 HVY
CLR
(11-088)

FINISH:
N/A

TITLE:
PFL 80X80 HVY
CLR

SCALE 1:1 SHEET SIZE C

SHEET
2 OF 2

PART NUMBER
11-088, iSA-14S

REV

SPECIFICATIONS ARE SUBJECT
TO CHANGE WITHOUT NOTICE