

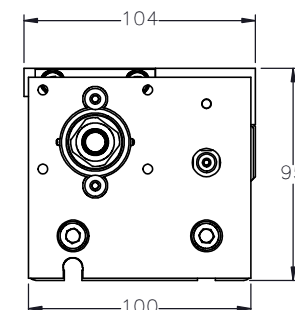
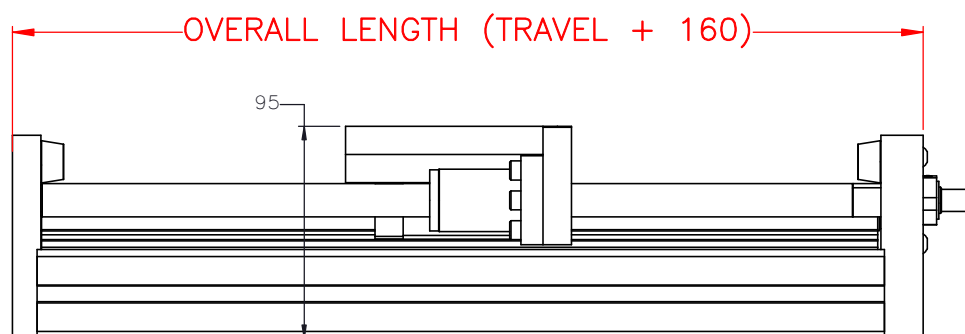
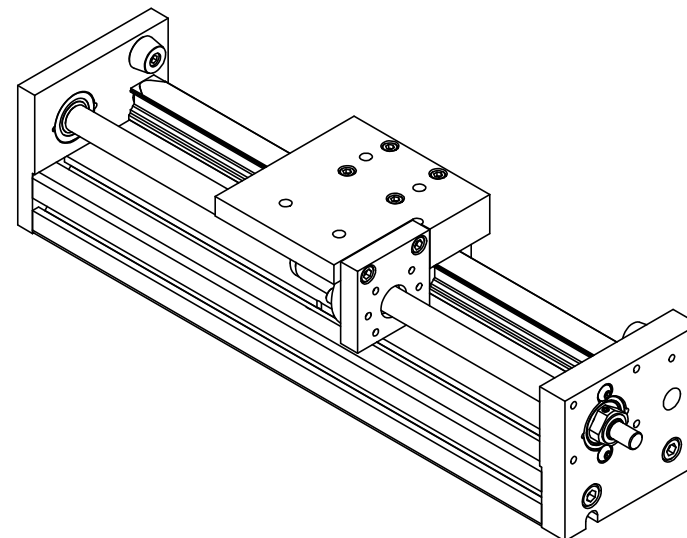
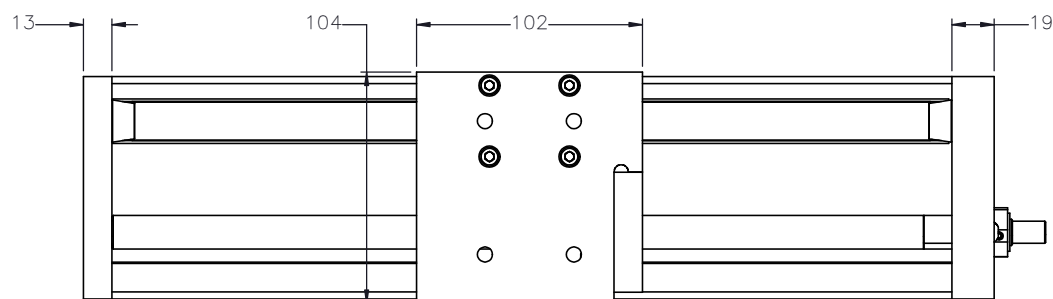
iSA-SRT-N- - -

TRAVEL MIN.	150mm
TRAVEL MAX.	650mm
SCREW DIAMETER	15mm
SCREW NUT DIAMETER	28mm
SCREW NUT LENGTH	58mm
CART WEIGHT	0.91kg
SYSTEM WEIGHT (kg)	(TRAVEL IN METERS x 7.4) + 2.9

ENTER
TRAVEL IN INCREMENTS OF 25mm

SELECT MOUNTING OPTION
A01 = NO MOTOR MOUNTING KIT
AM1 = MOTOR MOUNT KIT REQUESTED

SPECIFY BALL SCREW LEAD TYPE
05 = 5mm PITCH
10 = 10mm PITCH
20 = 20mm PITCH



APPROVED: _____

DATE: _____ SIGN & PRINT

PO:REFERENCE#: _____



THIS DRAWING IS THE PROPERTY OF IPS. ANY REPRODUCTIONS SHALL BE FOR QUOTATION, MANUFACTURING OR PURCHASING PURPOSES ONLY. RELEASE OF DRAWINGS TO OTHER CONCERNS DOES NOT CONSTITUTE LICENSING IN ANY WAY. INFORMATION CONTAINED HEREIN IS PROPRIETARY AND CONFIDENTIAL.

DRAWN BY: -- DATE: DD/MM/YYYY
CHECKED BY: -- DATE: DD/MM/YYYY
LAST SAVED BY: -- DATE: DD/MM/YYYY

UNLESS OTHERWISE SPECIFIED, DIMENSIONS ARE IN INCHES. TOLERANCES UNLESS NOTED OTHERWISE:
.X ± .03
.XX ± .010
.XXX ± .005
ANG ± 0°30'

SURFACE FINISH

BREAK ALL SHARP EDGES
DIMENSIONAL LIMITS APPLY AFTER FINISHING
THIRD ANGLE PROJECTION

MATERIAL:

FINISH:

SHEET

PART NUMBER

TITLE:
IPS SINGLE
RAIL SCREW TABLE

SCALE 1:1 SHEET SIZE C

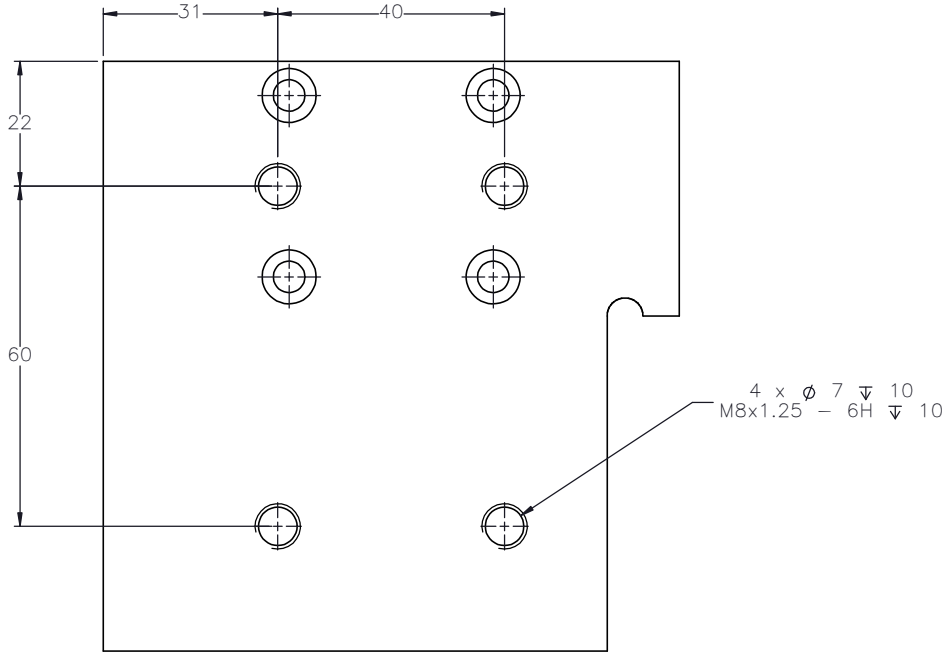
1 OF 2

iSA-SRT

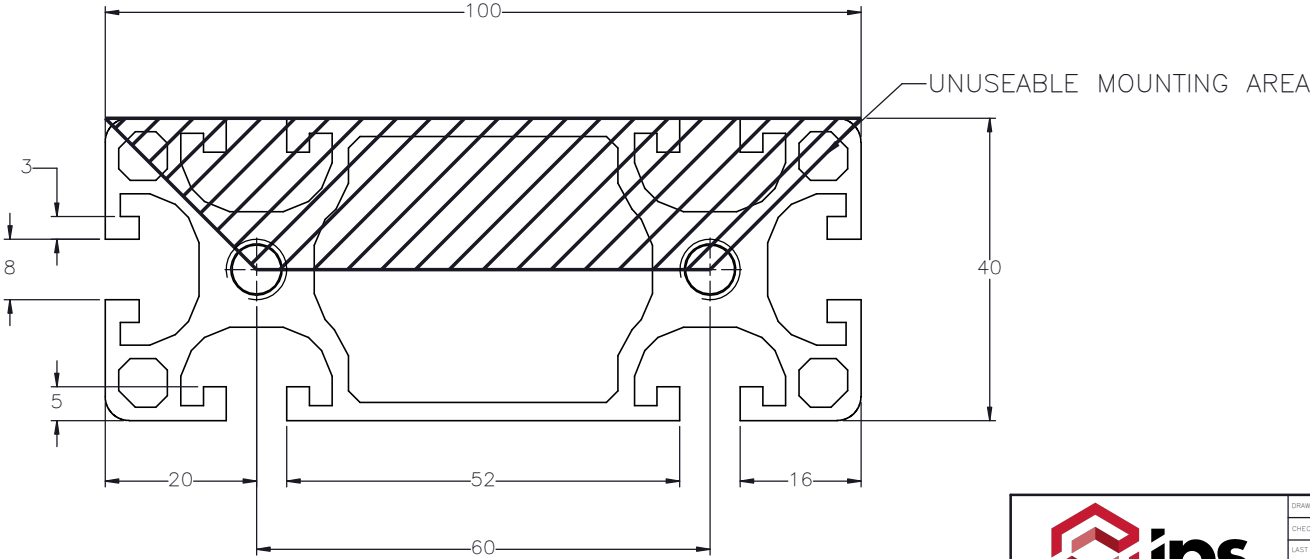
REV


SPECIFICATIONS ARE SUBJECT TO CHANGE WITHOUT NOTICE

CART TOP
MOUNTING FEATURES



SCREW TABLE BASE
MOUNTING FEATURES



 ips INDUSTRIAL PROFILE SYSTEMS	DRAWN BY: — —	DATE: DD/MM/YYYY	MATERIAL:	TITLE: IPS SINGLE RAIL SCREW TABLE			
	CHECKED BY: — —	DATE: DD/MM/YYYY					
	LAST SAVED BY: — —	DATE: DD/MM/YYYY	FINISH:	SCALE 1:1	SHEET SIZE C		
	UNLESS OTHERWISE SPECIFIED, DIMENSIONS ARE IN INCHES. TOLERANCES UNLESS NOTED OTHERWISE:		.X ± .03 .XX ± .010 .XXX ± .005 ANG ± 0°30'				
SURFACE FINISH			✓				
BREAK ALL SHARP EDGES DIMENSIONAL LIMITS APPLY AFTER FINISHING							
THIRD ANGLE PROJECTION							
SHEET			2 OF 2	PART NUMBER			
				ISA-SRT			
				REV			

SPECIFICATIONS ARE SUBJECT
TO CHANGE WITHOUT NOTICE