

iSA-R6S-E-BC-

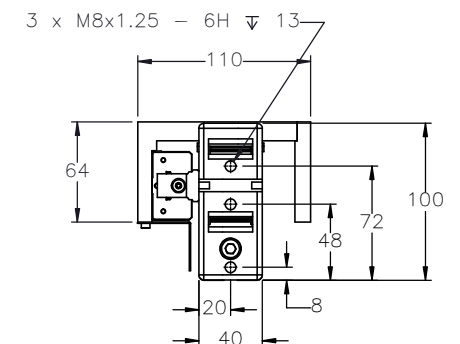
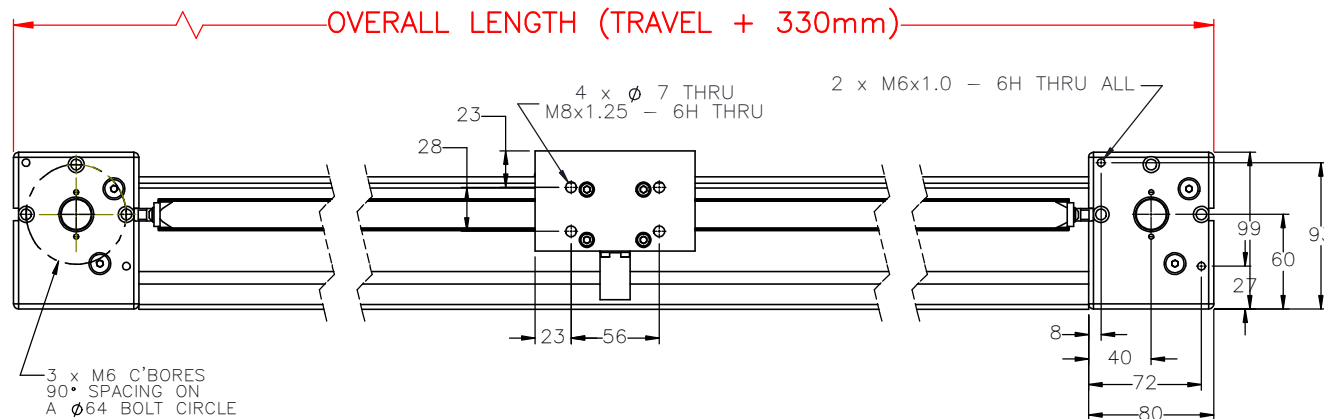
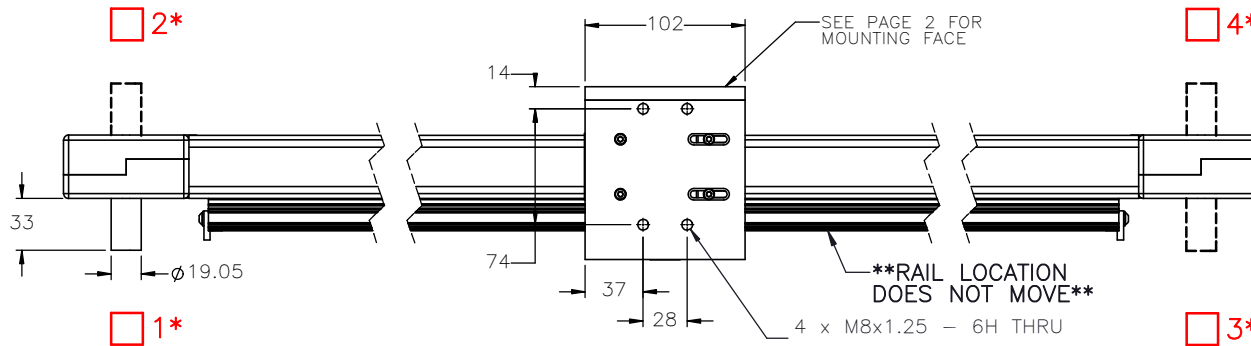
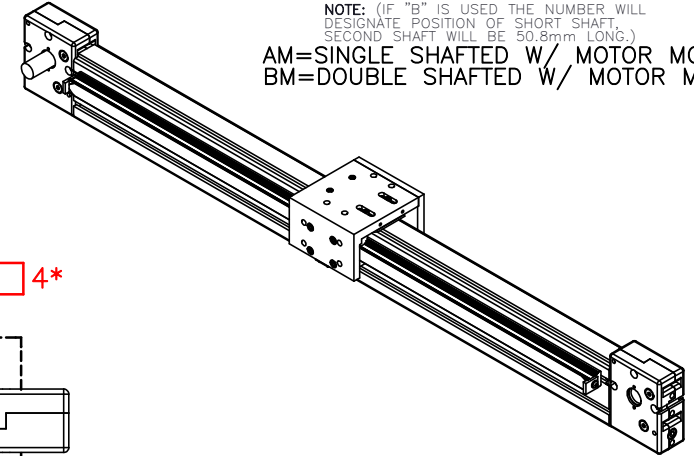
PULLEY PITCH DIAMETER	47.75mm (1.880")
PULLEY WIDTH	28.9mm (1.138")
PULLEY MATERIAL	STEEL
BELT WEIGHT (kg)	$((\text{TRAVEL IN METERS} \times 2) + .61) \times .12$
TRAVEL PER REV.	150mm
TRAVEL MIN.	150mm
TRAVEL MAX.	5825mm
CART WEIGHT (kg)	0.59kg
SYSTEM WEIGHT (kg)	$(\text{TRAVEL IN METERS} \times 3.7) + 3.7$

ENTER  
TRAVEL IN INCREMENTS OF 25mm  
SELECT  
DRIVE SHAFT LOCATION\*

SHAFTING TYPE  
A0= SINGLE SHAFTED  
B0= DOUBLE SHAFTED

NOTE: (IF "B" IS USED THE NUMBER WILL  
DESIGNATE POSITION OF SHORT SHAFT.  
SECOND SHAFT WILL BE 50.8mm LONG.)

AM= SINGLE SHAFTED W/ MOTOR MOUNT  
BM= DOUBLE SHAFTED W/ MOTOR MOUNT



APPROVED: \_\_\_\_\_

DATE: \_\_\_\_\_



THIS DRAWING IS THE PROPERTY OF IPS. ANY  
REPRODUCTIONS SHALL BE FOR QUOTATION,  
MANUFACTURING OR PURCHASING PURPOSES ONLY.  
RELEASE OF DRAWINGS TO OTHER CONCERNS DOES NOT  
CONSTITUTE LICENSING IN ANY WAY. INFORMATION  
CONTAINED HEREIN IS PROPRIETARY AND CONFIDENTIAL.

DRAWN BY: — DATE: DD/MM/YYYY  
CHECKED BY: — DATE: DD/MM/YYYY  
LAST SAVED BY: — DATE: DD/MM/YYYY

UNLESS OTHERWISE SPECIFIED,  
DIMENSIONS ARE IN INCHES.  
TOLERANCES UNLESS NOTED  
OTHERWISE:  
.X ± .03  
.XX ± .010  
.XXX ± .005  
ANG ± 0°30'

SURFACE FINISH

BREAK ALL SHARP EDGES  
DIMENSIONAL LIMITS APPLY AFTER FINISHING

THIRD ANGLE PROJECTION

MATERIAL:

FINISH:

SHEET

PART NUMBER

TITLE:

IPS 6 RAIL  
ACTUATOR

SCALE 1:1

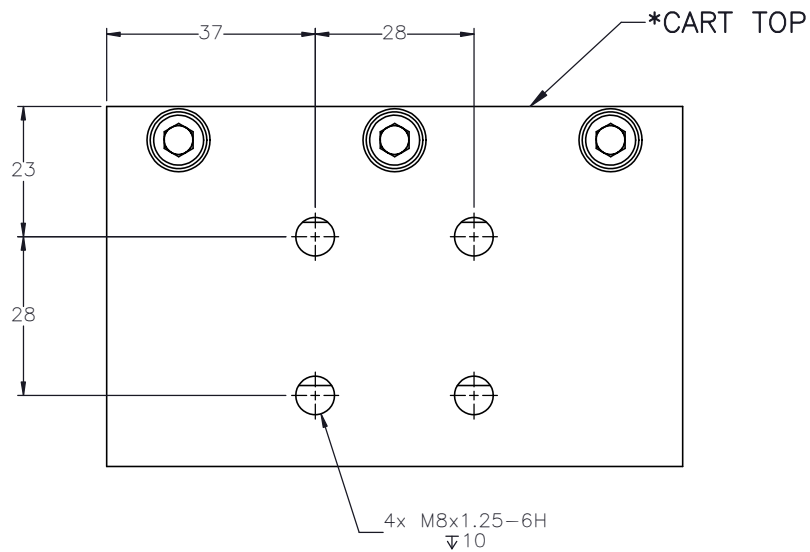
SHEET SIZE C

iSA-R6S

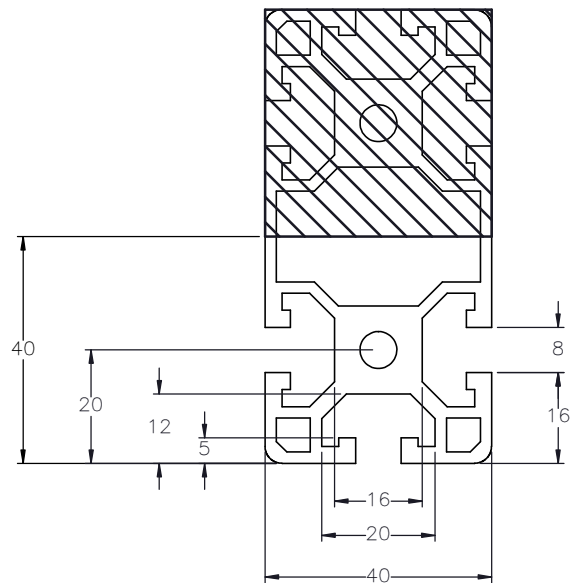
REV

SPECIFICATIONS ARE SUBJECT  
TO CHANGE WITHOUT NOTICE

## CART MOUNTING FEATURES

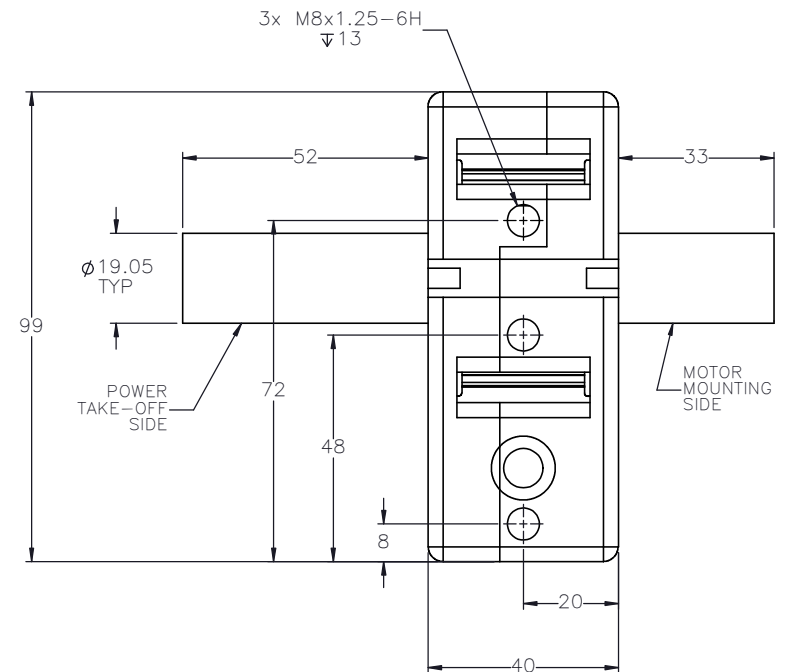
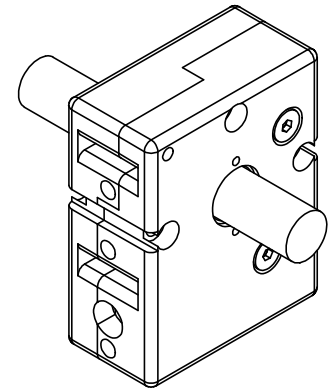


## CUSTOMER ACCESSIBLE MOUNTING FEATURES, T-NUT SLOTS



SUGGESTED  
MOUNTING ACCESSORY  
IPS P/N: i22138

## DOUBLE SHAFTED PULLEY



DRAWN BY: — DATE: DD/MM/YYYY  
CHECKED BY: — DATE: DD/MM/YYYY  
LAST SAVED BY: — DATE: DD/MM/YYYY

MATERIAL:  
FINISH:

TITLE:  
IPS 6 RAIL  
ACTUATOR

UNLESS OTHERWISE SPECIFIED,  
DIMENSIONS ARE IN INCHES.  
TOLERANCES UNLESS NOTED  
OTHERWISE:  
.XX ± .03  
.XX ± .010  
.XXX ± .005  
ANG ± 0°30'

SURFACE FINISH  $\nabla$

BREAK ALL SHARP EDGES  
DIMENSIONAL LIMITS APPLY AFTER FINISHING  
THIRD ANGLE PROJECTION

SHEET  
2 OF 2

PART NUMBER

SCALE 1:1 SHEET SIZE C  
iSA-R6S

SPECIFICATIONS ARE SUBJECT  
TO CHANGE WITHOUT NOTICE