

iSA-R6D-E-BC-



PULLEY PITCH DIAMETER	47.75mm (1.880")
PULLEY WIDTH	28.9mm (1.138")
PULLEY MATERIAL	STEEL
BELT WEIGHT (kg)	$((\text{TRAVEL IN METERS} \times 2) + .61) \times .12$
TRAVEL PER REV.	150mm
TRAVEL MIN.	150mm
TRAVEL MAX.	5825mm
CART WEIGHT (kg)	1.41kg
SYSTEM WEIGHT (kg)	$(\text{TRAVEL IN METERS} \times 4.4) + 4.3$

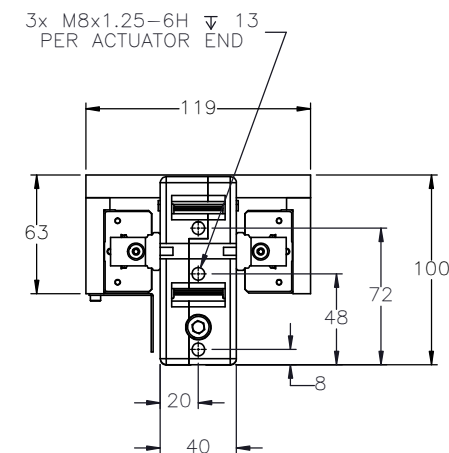
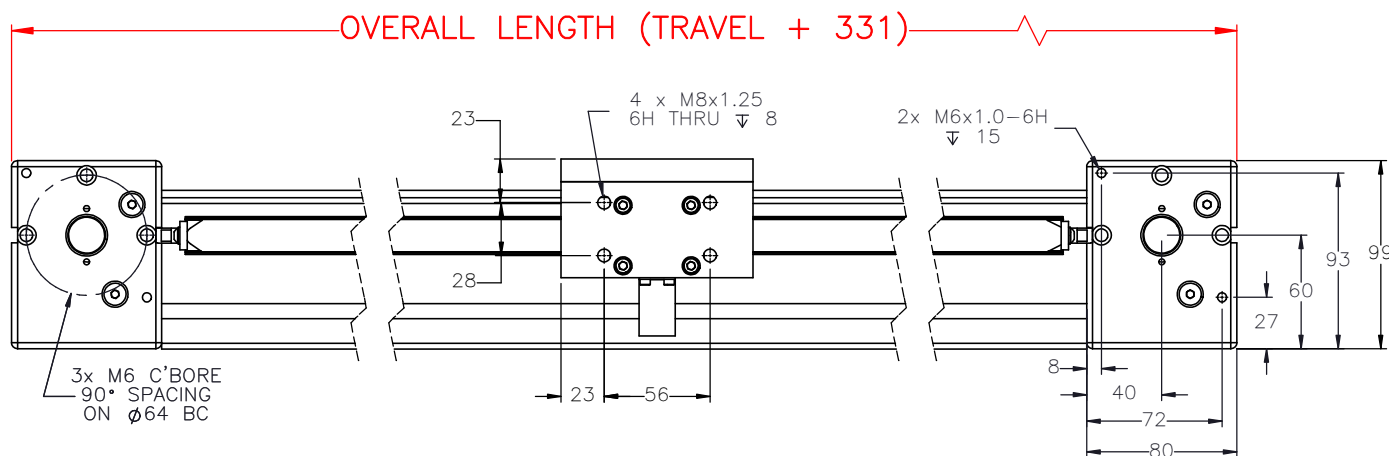
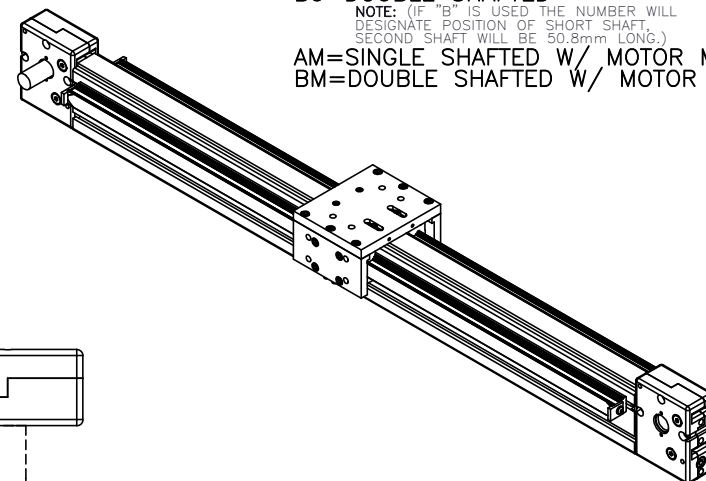
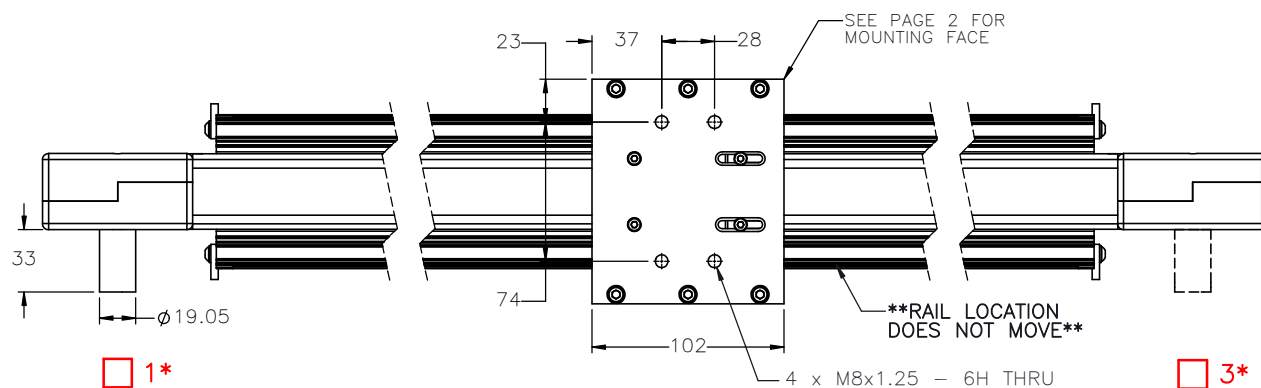
ENTER  
TRAVEL IN INCREMENTS OF 25mm

SELECT  
DRIVE SHAFT LOCATION\*

SHAFTING TYPE  
A0= SINGLE SHAFTED  
B0= DOUBLE SHAFTED

NOTE: (IF "B" IS USED THE NUMBER WILL  
DESIGNATE POSITION OF SHORT SHAFT.  
SECOND SHAFT WILL BE 50.8mm LONG.)

AM= SINGLE SHAFTED W/ MOTOR MOUNT  
BM= DOUBLE SHAFTED W/ MOTOR MOUNT



APPROVED: \_\_\_\_\_

DATE: \_\_\_\_\_



THIS DRAWING IS THE PROPERTY OF IPS. ANY  
REPRODUCTIONS SHALL BE FOR QUOTATION,  
MANUFACTURING OR PURCHASING PURPOSES ONLY.  
RELEASE OF DRAWINGS TO OTHER CONCERNS DOES NOT  
CONSTITUTE LICENSING IN ANY WAY. INFORMATION  
CONTAINED HEREIN IS PROPRIETARY AND CONFIDENTIAL

DRAWN BY: — DATE: DD/MM/YYYY  
CHECKED BY: — DATE: DD/MM/YYYY  
LAST SAVED BY: — DATE: DD/MM/YYYY

UNLESS OTHERWISE SPECIFIED,  
DIMENSIONS ARE IN INCHES.  
TOLERANCES UNLESS NOTED  
OTHERWISE:  
.XX ± .03  
.XX ± .010  
.XXX ± .005  
ANG ± 0°30'

SURFACE FINISH

BREAK ALL SHARP EDGES  
DIMENSIONAL LIMITS APPLY AFTER FINISHING  
THIRD ANGLE PROJECTION

MATERIAL:

FINISH:

SHEET

PART NUMBER

TITLE:  
IPS 6 DUAL  
RAIL ACTUATOR

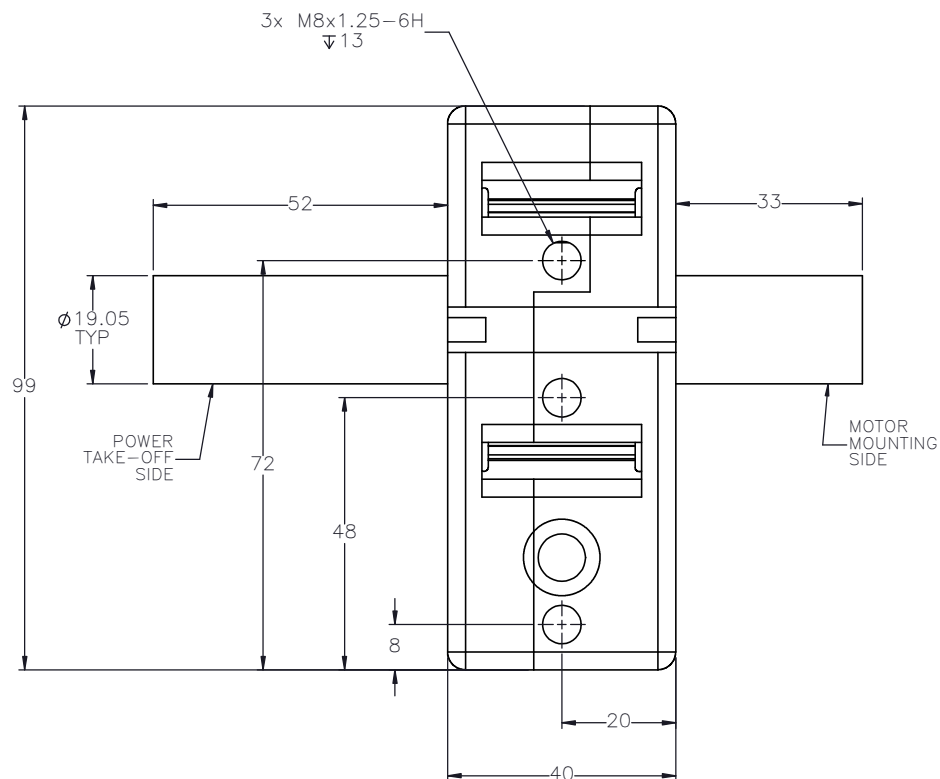
SCALE 1:1 SHEET SIZE C

iSA-R6D

REV

SPECIFICATIONS ARE SUBJECT  
TO CHANGE WITHOUT NOTICE

1 OF 2



# FEATURES

4 x  $\phi 7$  THRU ALL  
M8x1.25 - 6H THRU ALL

\*CART TOP

23

56

23

28

The drawing shows a rectangular top view of a cart. It features four circular holes arranged in a 2x2 grid. Each hole has a crosshair indicating its center. The holes are labeled with the text '4 x  $\phi 7$  THRU ALL' and 'M8x1.25 - 6H THRU ALL'. The dimensions are as follows: the total width is 56, the distance between the centers of the two holes in each row is 23, the total height is 28, and the distance from the top edge to the center of the top row of holes is 23. A leader line points to the top edge of the rectangle with the label '\*CART TOP'.

Technical drawing of a mechanical part, showing a cross-section (top) and a front view (bottom). The cross-section is hatched and features a central hole. The front view shows a symmetrical shape with a central hole and various dimensions. Dimensions include 20, 12, 5, 16, 20, 40, 8, 16, 53, and 27.



THIS DRAWING IS THE PROPERTY OF IPS. ANY REPRODUCTIONS SHALL BE FOR QUOTATION, MANUFACTURING, OR PURCHASING PURPOSES ONLY. RELEASE OF DRAWINGS TO OTHER CONCERNS DOES NOT CONSTITUTE LICENSING IN ANY WAY. INFORMATION CONTAINED HEREIN IS PROPRIETARY AND CONFIDENTIAL.

DRAWN BY: — —	DATE: DD/MM/YYYY								
CHECKED BY: — —	DATE: DD/MM/YYYY								
LAST SAVED BY: — —	DATE: DD/MM/YYYY								
UNLESS OTHERWISE SPECIFIED, DIMENSIONS ARE IN INCHES. TOLERANCES UNLESS NOTED OTHERWISE:	<table> <tr> <td>.X ±</td> <td>.03</td> </tr> <tr> <td>.XX ±</td> <td>.010</td> </tr> <tr> <td>.XXX ±</td> <td>.005</td> </tr> <tr> <td>ANG ±</td> <td>0° 30'</td> </tr> </table>	.X ±	.03	.XX ±	.010	.XXX ±	.005	ANG ±	0° 30'
.X ±	.03								
.XX ±	.010								
.XXX ±	.005								
ANG ±	0° 30'								

SURFACE FINISH

BREAK ALL SHARP EDGES  
DIMENSIONAL LIMITS APPLY AFTER FINISHING

**THIRD ANGLE PROJECTION**

✓	MATERIAL:
---	-----------

	FINISH:
--	---------

SHEET

	PART NUMBER
--	-------------

TITLE:  
IPS 6 DUAL  
RAIL ACTUATOR

SCALE	1:1	SHEET SIZE	C
-------	-----	------------	---

iSA-R6D

22	REV
----	-----