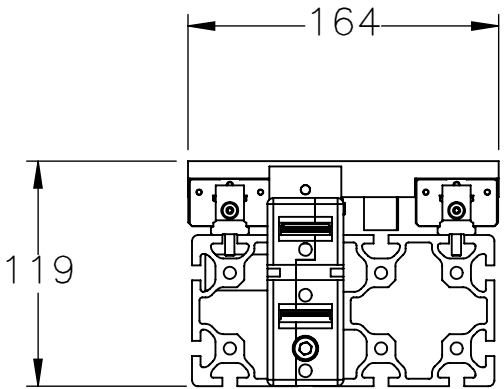
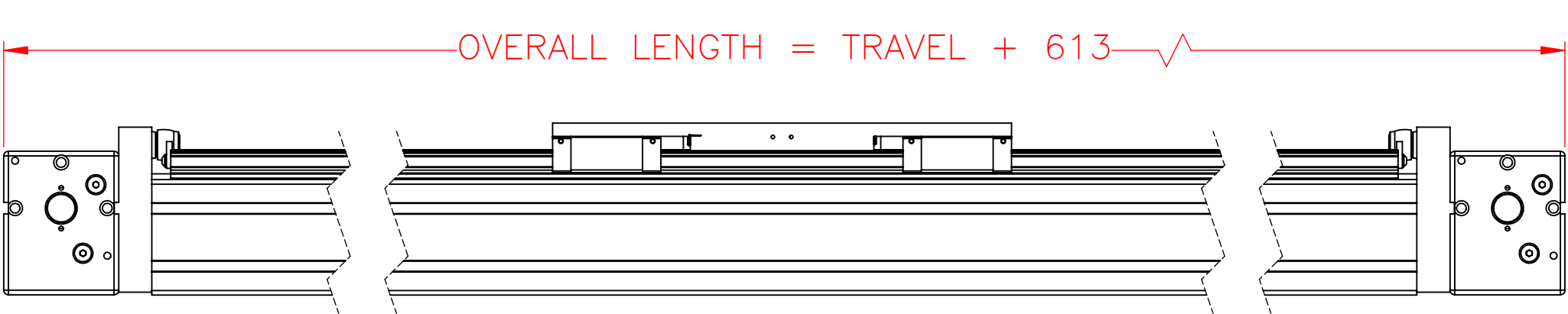
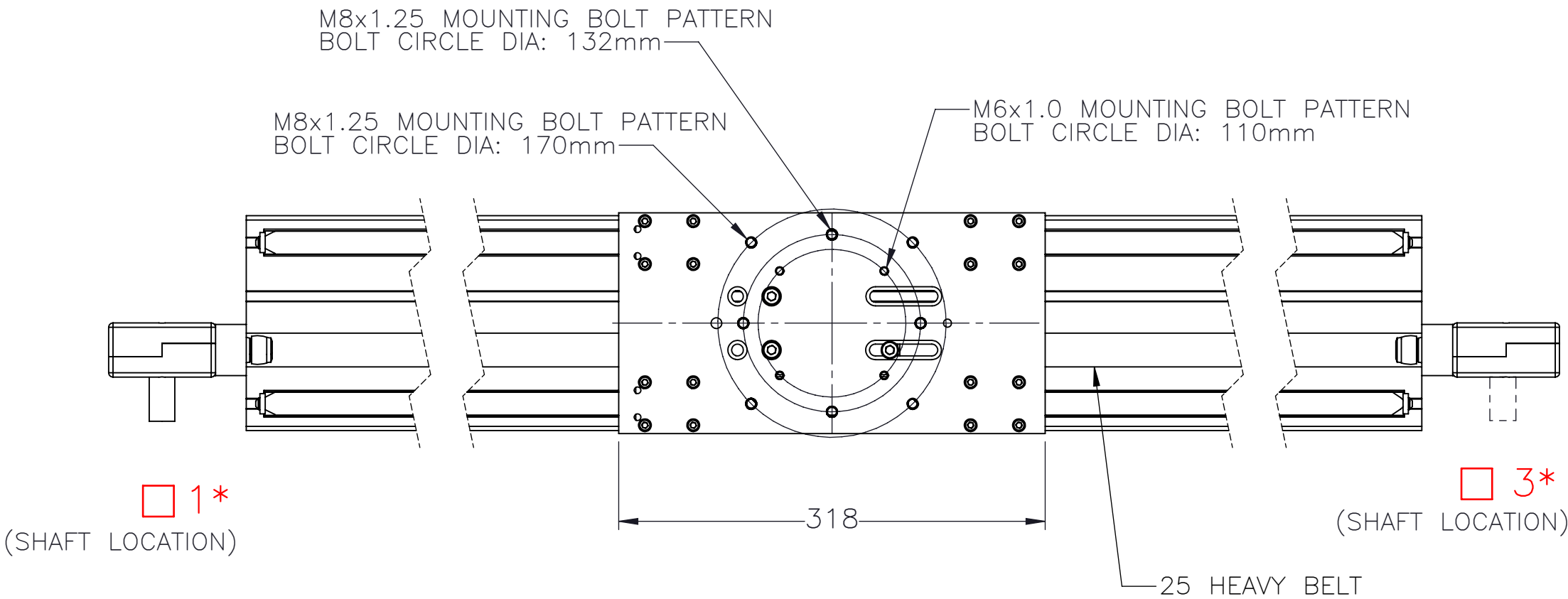
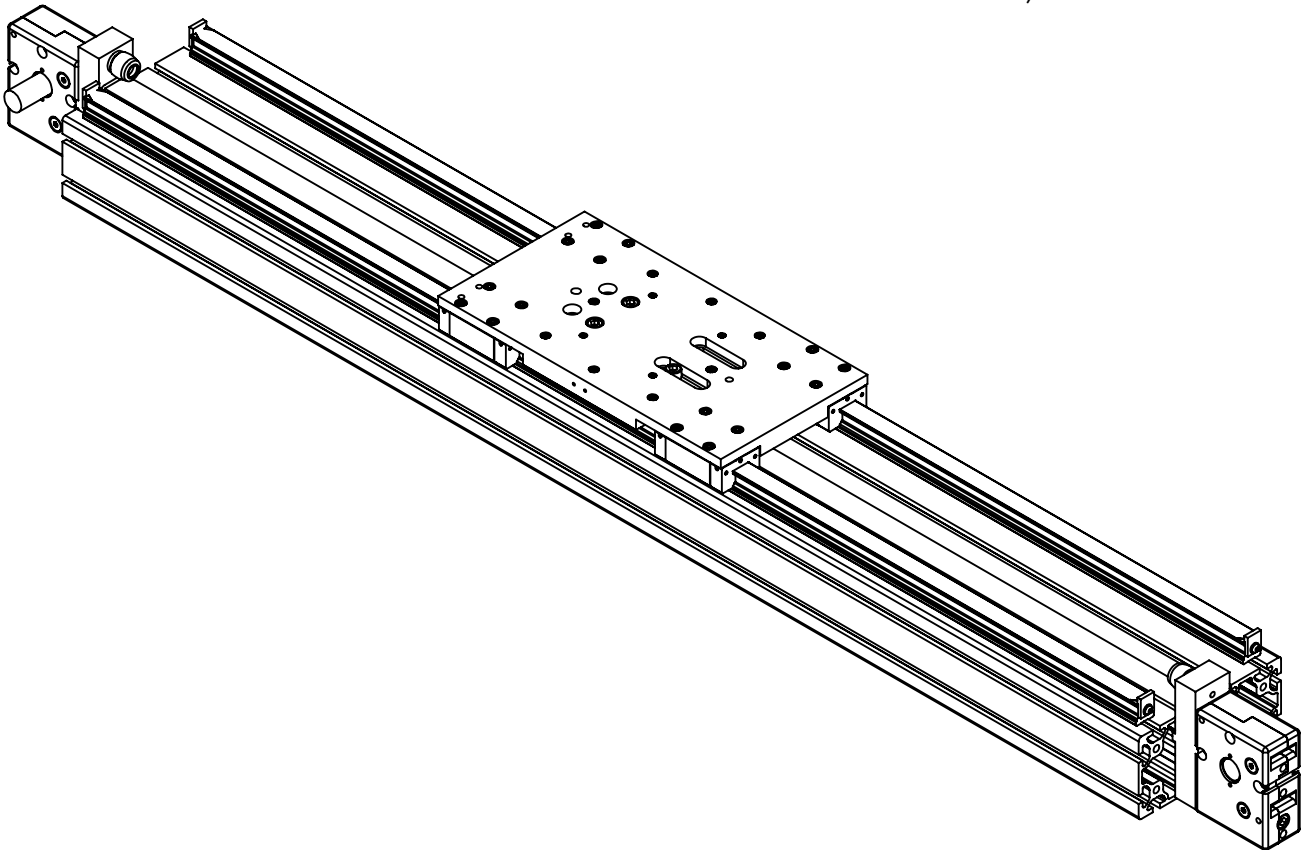


iSA-R2D-0-00- [] [] - []

PULLEY PITCH DIAMETER	45.75mm (1.880")
PULLEY WIDTH	28.9mm (1.138")
PULLEY MATERIAL	STEEL
BELT WEIGHT (kg)	((TRAVEL IN METERS x 2)+.94) x .34
TRAVEL PER REV.	150mm
TRAVEL MIN.	150mm
TRAVEL MAX.	5575mm
CART WEIGHT (kg)	3.8kg
SYSTEM WEIGHT (kg)	(TRAVEL IN METERS x 16.7) + 13.0


ENTER
TRAVEL IN INCREMENTS OF 25mm
SELECT
DRIVE SHAFT LOCATION*
SHAFTING TYPE
A0=SINGLE SHAFTED
B0=DOUBLE SHAFTED
NOTE: (IF "B" IS USED THE NUMBER WILL
DESIGNATE POSITION OF THE BOSS ON THE PULLEY)
AM=SINGLE SHAFTED W/ MOTOR MOUNT
BM=DOUBLE SHAFTED W/ MOTOR MOUNT



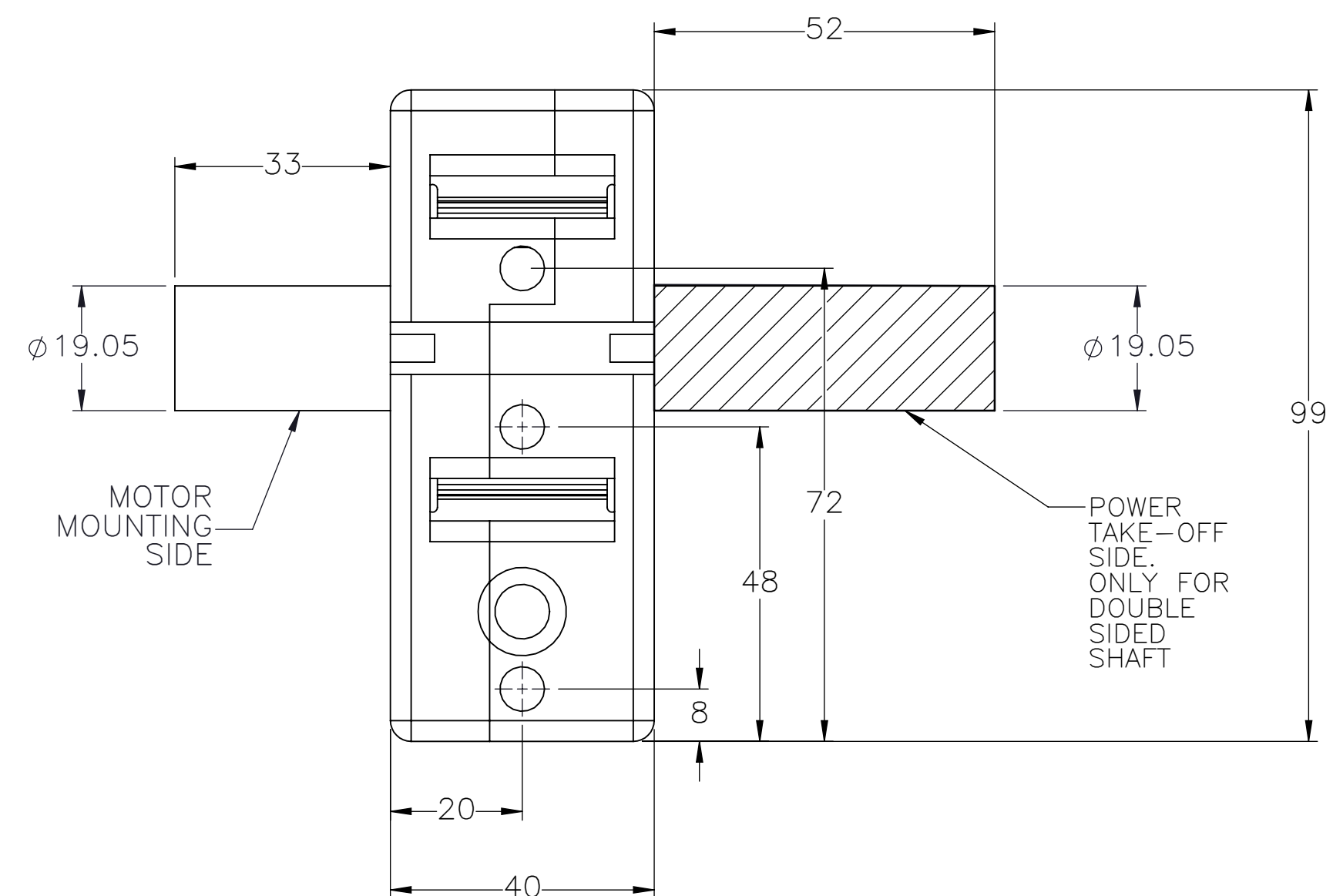
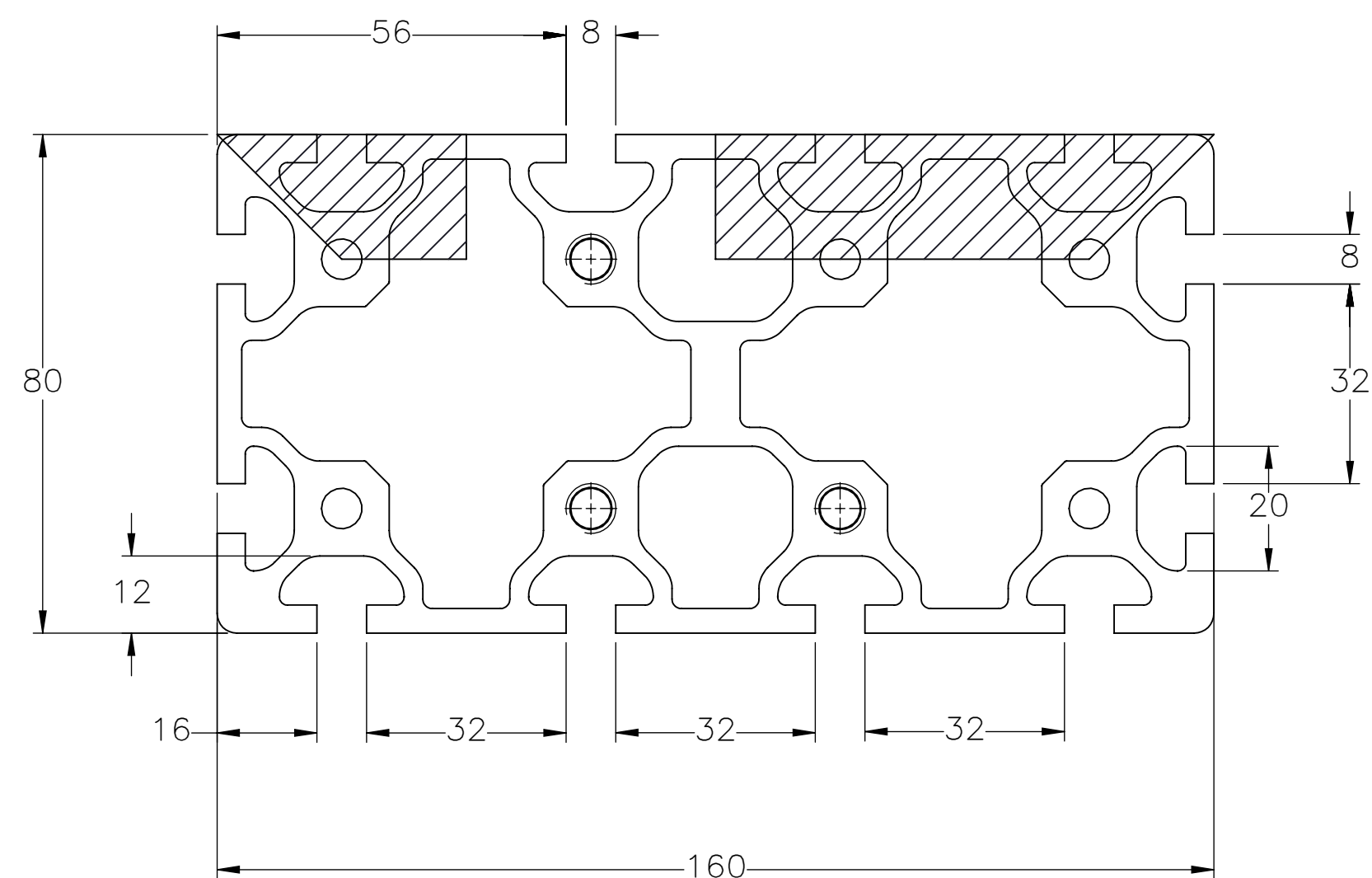
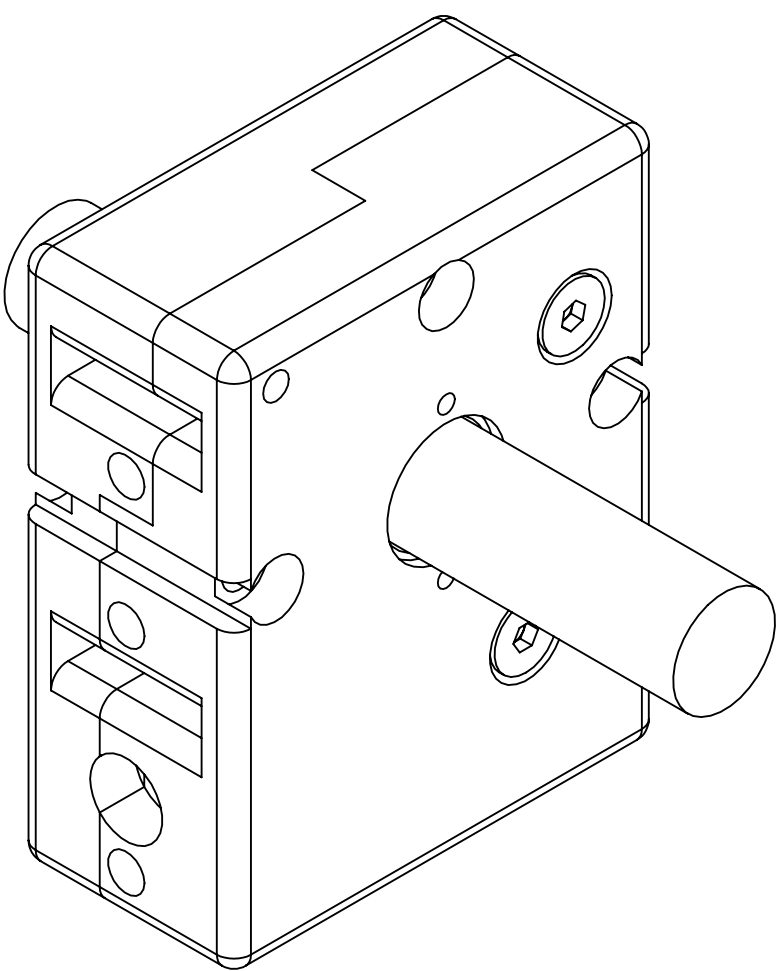
APPROVED: _____

DATE: _____

SPECIFICATIONS ARE SUBJECT
TO CHANGE WITHOUT NOTICE

 INDUSTRIAL PROFILE SYSTEMS	DRAWN BY: — —	DATE: DD/MM/YYYY	MATERIAL:		TITLE: IPS RAIL ACTUATOR				
	CHECKED BY: — —	DATE: DD/MM/YYYY							
	LAST SAVED BY: — —	DATE: DD/MM/YYYY							
	UNLESS OTHERWISE SPECIFIED, DIMENSIONS ARE IN MILLIMETERS. TOLERANCES UNLESS NOTED OTHERWISE:		.X ± .762 .XX ± .254 .XXX ± .127 ANG ± 0°30'		FINISH:				
SURFACE FINISH $\sqrt{\text{63}}$				SCALE 1:1		SHEET SIZE C			
BREAK ALL SHARP EDGES DIMENSIONAL LIMITS APPLY AFTER FINISHING		THIRD ANGLE PROJECTION		SHEET 1 OF 2		PART NUMBER iSA-R2D-0-00-AOX-XXXX		REV 02	

SHAFTED PULLEY



THIS DRAWING IS THE PROPERTY OF IPS. ANY
REPRODUCTIONS SHALL BE FOR QUOTATION,
MANUFACTURING, OR PURCHASING PURPOSES ONLY.
RELEASE OF DRAWINGS TO OTHER CONCERNS DOES NOT
CONSTITUTE LICENSING IN ANY WAY. INFORMATION
CONTAINED HEREIN IS PROPRIETARY AND CONFIDENTIAL

DRAWN BY: — —		DATE: DD/MM/YYYY		MATERIAL:		TITLE: IPS RAIL ACTUATOR	
CHECKED BY: — —		DATE: DD/MM/YYYY					
LAST SAVED BY: — —		DATE: DD/MM/YYYY					
UNLESS OTHERWISE SPECIFIED: DIMENSIONS ARE IN MILLIMETERS. TOLERANCES UNLESS NOTED OTHERWISE:		.X ± .762 .XX ± .254 .XXX ± .127 ANG ± 0°30'		FINISH:		SCALE 1:1 SHEET SIZE C	
SURFACE FINISH $\sqrt{63}$							
BREAK ALL SHARP EDGES DIMENSIONAL LIMITS APPLY AFTER FINISHING THIRD ANGLE PROJECTION							
2 OF 2		iSA-R2D-0-00-AOX-XXXX		02			