

iSA-M6S-E-BC-

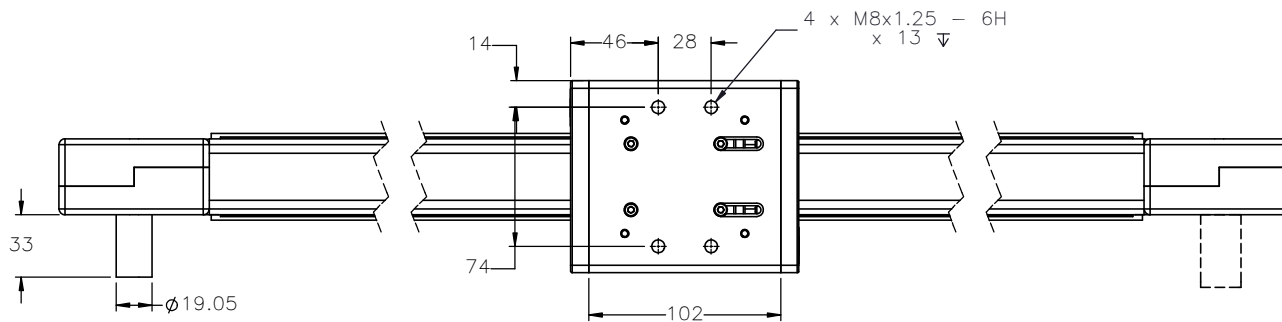
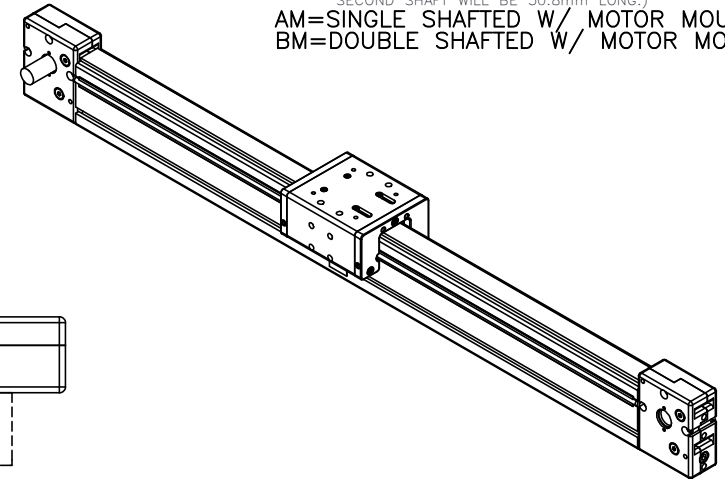
PULLEY PITCH DIAMETER	47.75mm (1.880")
PULLEY WIDTH	28.9mm (1.138")
PULLEY MATERIAL	STEEL
BELT WEIGHT (kg)	$((\text{TRAVEL IN METERS} \times 2) + .64) \times .12$
TRAVEL PER REV.	150mm
TRAVEL MIN.	150mm
TRAVEL MAX.	5825mm
CART WEIGHT (kg)	1.59kg
SYSTEM WEIGHT (kg)	$(\text{TRAVEL IN METERS} \times 3.9) + 3.5$

ENTER
TRAVEL IN INCREMENTS OF 25mm
SELECT
DRIVE SHAFT LOCATION*

SHAFTING TYPE
AO= SINGLE SHAFTED
BO= DOUBLE SHAFTED

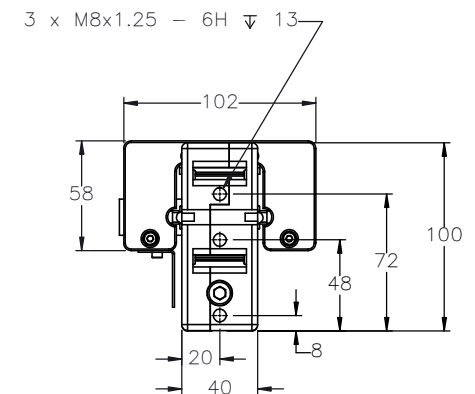
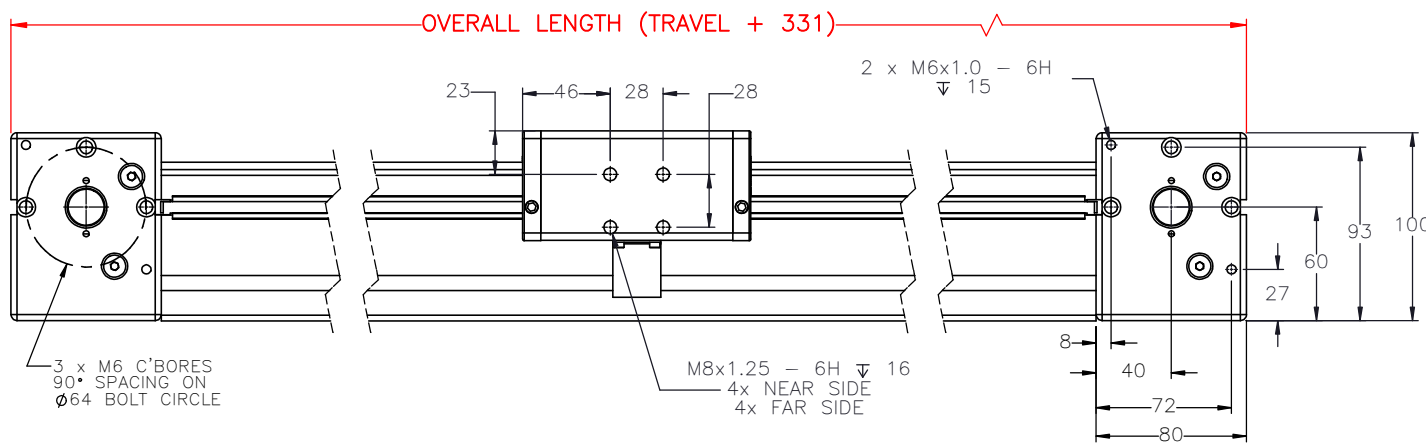
NOTE: (IF "B" IS USED THE NUMBER WILL
DESIGNATE POSITION OF SHORT SHAFT.
SECOND SHAFT WILL BE 50.8mm LONG.)

AM= SINGLE SHAFTED W/ MOTOR MOUNT
BM= DOUBLE SHAFTED W/ MOTOR MOUNT



1*

3*



APPROVED: _____

DATE: _____



DRAWN BY: — DATE: DD/MM/YYYY
CHECKED BY: — DATE: DD/MM/YYYY
LAST SAVED BY: — DATE: DD/MM/YYYY

MATERIAL:
FINISH:

TITLE:
IPS 6
ACTUATOR

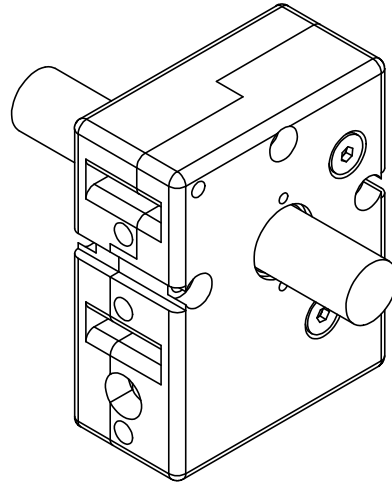
SURFACE FINISH
BREAK ALL SHARP EDGES
DIMENSIONAL LIMITS APPLY AFTER FINISHING
THIRD ANGLE PROJECTION

SHEET
1 OF 2

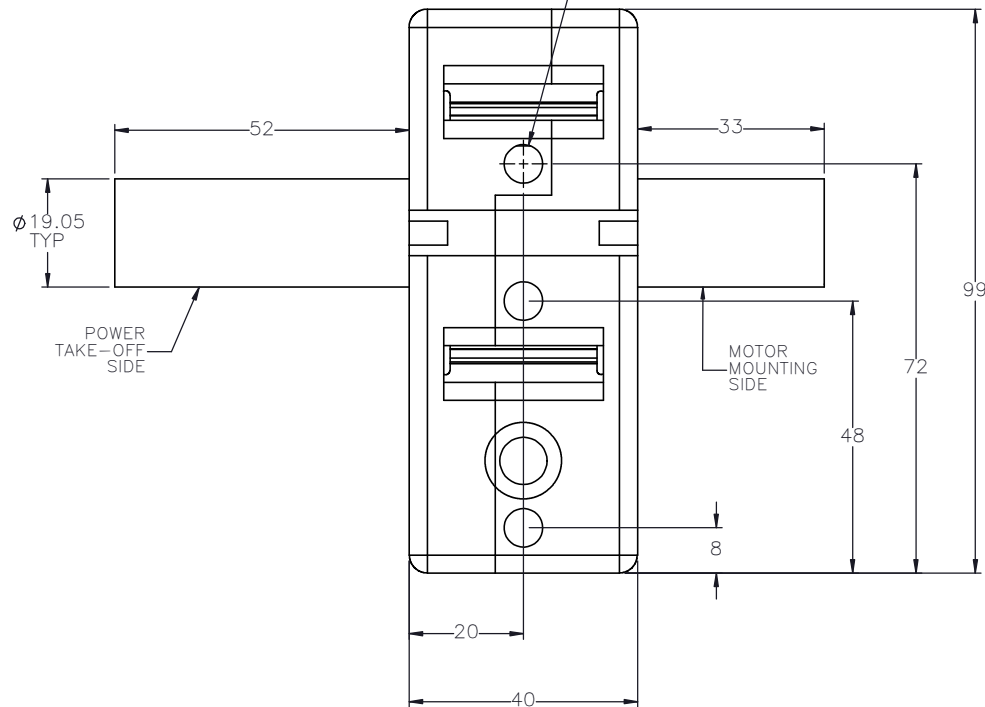
SCALE 1:1 SHEET SIZE C
REV
iSA-M6S

SPECIFICATIONS ARE SUBJECT
TO CHANGE WITHOUT NOTICE

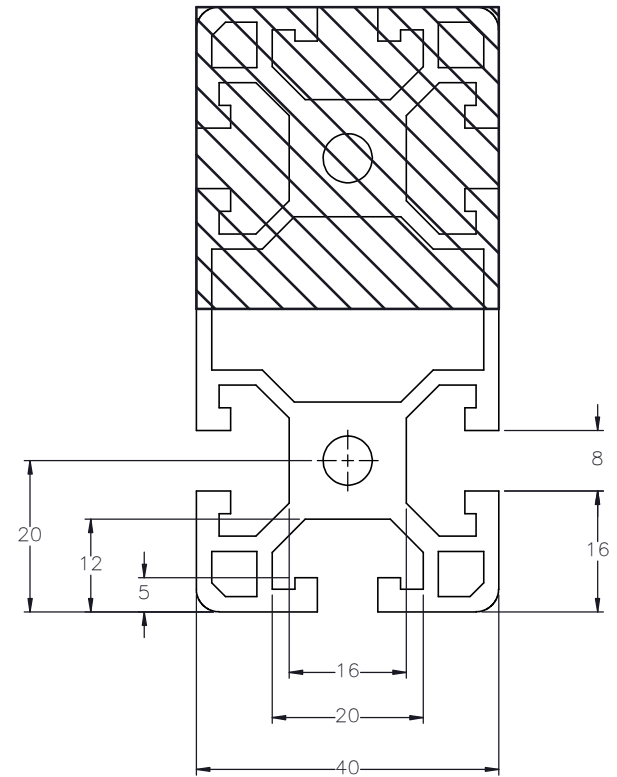
DOUBLE SHAFTED PULLEY



3 x M8x1.25-6H
▽ 13



CUSTOMER ACCESSIBLE MOUNTING FEATURES, T-NUT SLOTS



DRAWN BY: — DATE: DD/MM/YYYY
CHECKED BY: — DATE: DD/MM/YYYY
LAST SAVED BY: — DATE: DD/MM/YYYY

MATERIAL: —
FINISH: —

TITLE: IPS 6 ACTUATOR
SCALE: 1:1 SHEET SIZE: C

THIS DRAWING IS THE PROPERTY OF IPS. ANY REPRODUCTIONS SHALL BE FOR QUOTATION, MANUFACTURING OR PURCHASING PURPOSES ONLY. RELEASE OF DRAWINGS TO OTHER CONCERNS DOES NOT CONSTITUTE LICENSING IN ANY WAY. INFORMATION CONTAINED HEREIN IS PROPRIETARY AND CONFIDENTIAL.

SURFACE FINISH: ☒ BREAK ALL SHARP EDGES
DIMENSIONAL LIMITS APPLY AFTER FINISHING
THIRD ANGLE PROJECTION

SHEET: 2 OF 2
PART NUMBER: —

REV: —
ISA-M6S

SPECIFICATIONS ARE SUBJECT TO CHANGE WITHOUT NOTICE