

iSA-628-B-AB-

PULLEY PITCH DIAMETER	33.42mm (1.316")
PULLEY WIDTH	16.3mm (.642")
PULLEY MATERIAL	STEEL
BELT WEIGHT (kg)	$((\text{TRAVEL IN METERS} \times 2) + .50) \times .04$
TRAVEL PER REV.	105mm
TRAVEL MIN.	150mm
TRAVEL MAX.	5850mm
CART WEIGHT (kg)	0.54kg
SYSTEM WEIGHT (kg)	$(\text{TRAVEL IN METERS} \times 2.0) + 1.6$

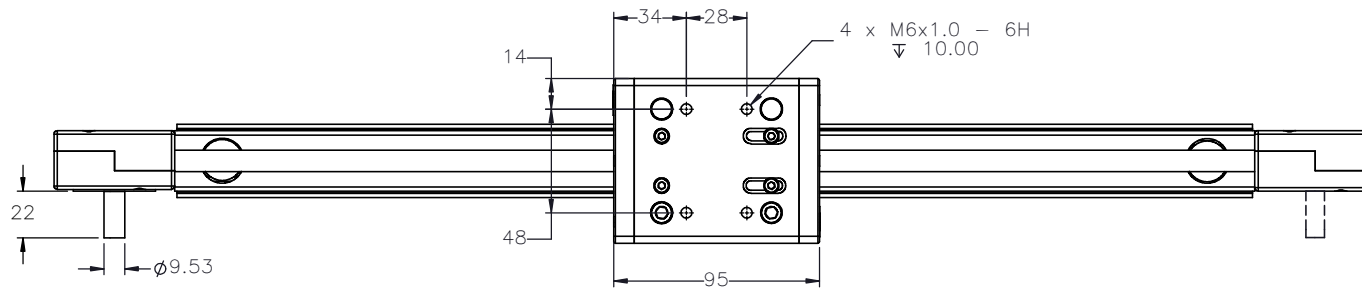
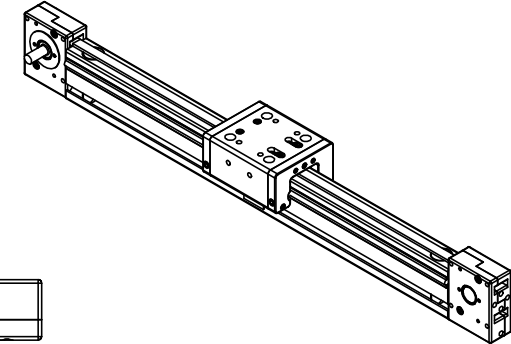
ENTER
TRAVEL IN INCREMENTS OF 25mm

SELECT
DRIVE SHAFT LOCATION*

SHAFTING TYPE
A0= SINGLE SHAFTED
B0= DOUBLE SHAFTED

NOTE: (IF "B" IS USED THE NUMBER WILL
DESIGNATE POSITION OF THE BOSS ON THE PULLEY)

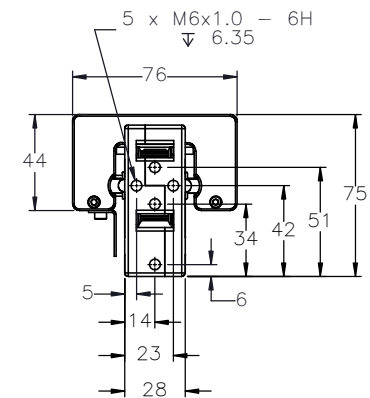
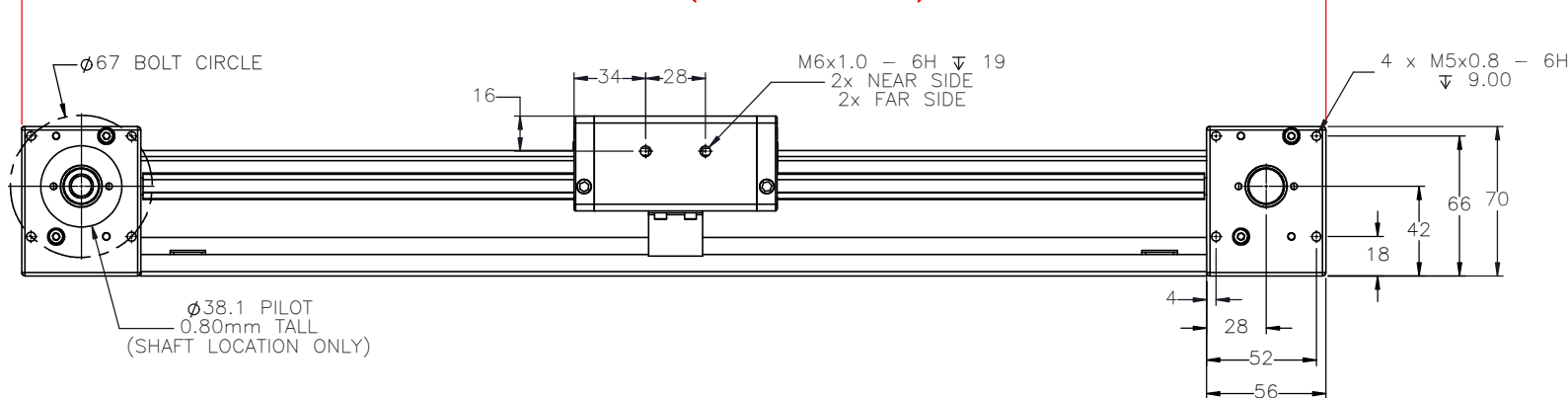
AM= SINGLE SHAFTED W/ MOTOR MOUNT
BM= DOUBLE SHAFTED W/ MOTOR MOUNT



1*

3*

OVERALL LENGTH (TRAVEL + 258)



APPROVED: _____

DATE: _____



THIS DRAWING IS THE PROPERTY OF IPS. ANY
REPRODUCTIONS SHALL BE FOR QUOTATION,
MANUFACTURING OR PURCHASING PURPOSES ONLY.
RELEASE OF DRAWINGS TO OTHER CONCERNS DOES NOT
CONSTITUTE LICENSING IN ANY WAY. INFORMATION
CONTAINED HEREIN IS PROPRIETARY AND CONFIDENTIAL.

DRAWN BY: — DATE: DD/MM/YYYY
CHECKED BY: — DATE: DD/MM/YYYY
LAST SAVED BY: — DATE: DD/MM/YYYY

UNLESS OTHERWISE SPECIFIED:
DIMENSIONS ARE IN MILLIMETER
TOLERANCES UNLESS NOTED
OTHERWISE:
.X ± .762
.XX ± .254
.XXX ± .127
ANG ± 0°30'

SURFACE FINISH

BREAK ALL SHARP EDGES
DIMENSIONAL LIMITS APPLY AFTER FINISHING
THIRD ANGLE PROJECTION

MATERIAL:

FINISH:

SHEET

PART NUMBER

TITLE:
IPS MINI 6
ACTUATOR

SCALE 1:1 SHEET SIZE C

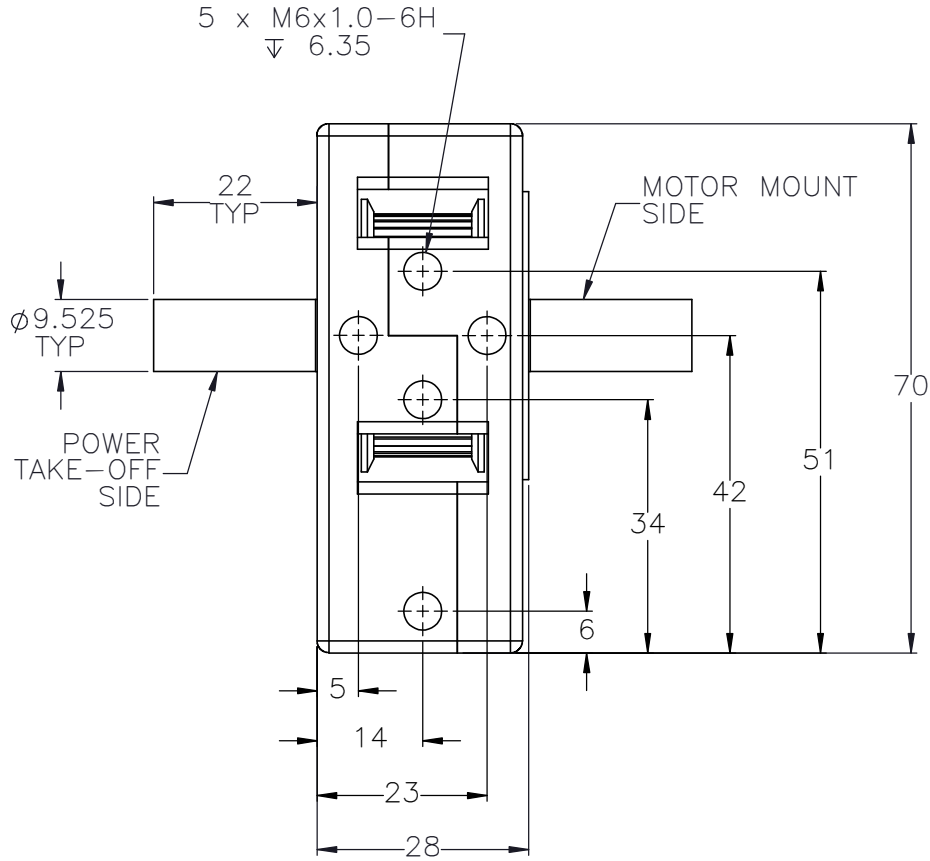
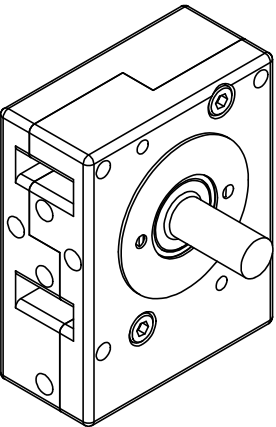
1 OF 2

iSA-628

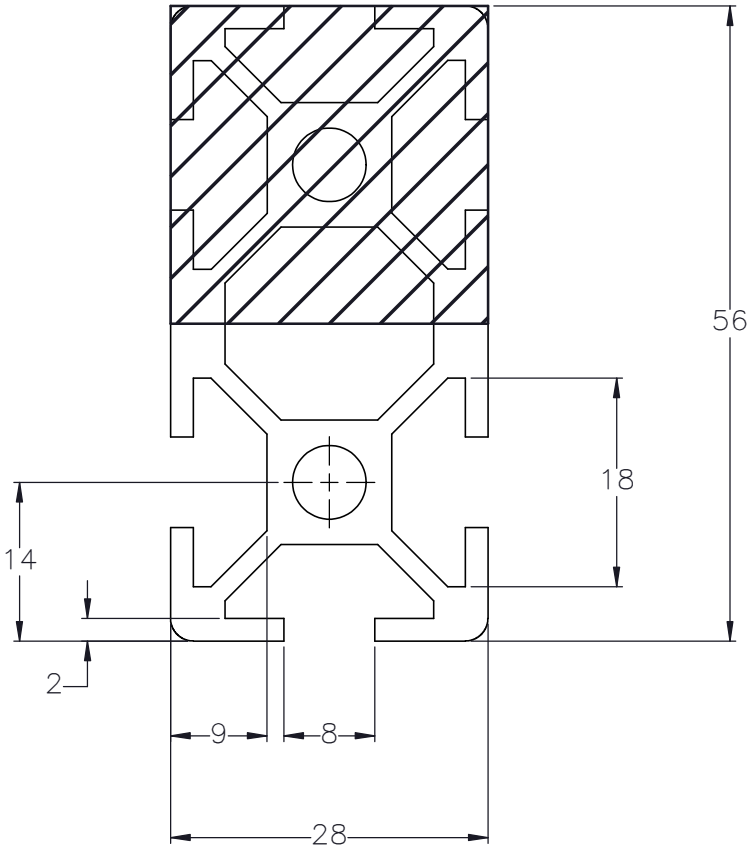
REV

SPECIFICATIONS ARE SUBJECT
TO CHANGE WITHOUT NOTICE

DOUBLE SHAFTED PULLEY



CUSTOMER ACCESSIBLE MOUNTING FEATURES, T-NUT SLOTS



<small>DRAWN BY: --</small> <small>CHECKED BY: --</small> <small>DATE: DD/MM/YYYY</small> <small>LAST SAVED BY: --</small> <small>DATE: DD/MM/YYYY</small>	<small>MATERIAL:</small> <small>FINISH:</small> <small>SURFACE FINISH</small> ✓ <small>BREAK ALL SHARP EDGES</small> <small>DIMENSIONAL LIMITS APPLY AFTER FINISHING</small> <small>THIRD ANGLE PROJECTION</small>	<small>TITLE:</small> IPS MINI 6 ACTUATOR <small>SCALE 1:1</small> <small>SHEET SIZE C</small>
<small>THIS DRAWING IS THE PROPERTY OF IPS. ANY REPRODUCTIONS SHALL BE FOR QUOTATION, MANUFACTURING OR PURCHASING PURPOSES ONLY. RELEASE OF DRAWINGS TO OTHER CONCERNS DOES NOT CONSTITUTE LICENSING IN ANY WAY. INFORMATION CONTAINED HEREIN IS PROPRIETARY AND CONFIDENTIAL.</small>	<small>SHEET</small> 2 OF 2	<small>PART NUMBER</small> iSA-628

SPECIFICATIONS ARE SUBJECT TO CHANGE WITHOUT NOTICE